

LFC 18-30 PRE-DELIVERY CHECKLIST

DATE

DEALERSHIP

MODEL SIZE

SERIAL #



Pumps	34 gpm	
	68 gpm	

Transfer Pump	yes	
	no	

Row Crop Option	yes	
	no	

Main pump control switch extension harness	yes	
	no	

TIRES

Model	Location	Size	Pressure		<input checked="" type="checkbox"/>
LFC3000	Front	21.5L X 16.1 -8/10 PLY	24 psi	(165 kpa)	
	REAR	540/65 R24	17 psi	(117 kpa)	
		28L X26 - 10/12 PLY	22 psi	(152 kpa)	
		800/65 R32	15 psi	(103 kpa)	
LFC 2400	FRONT	14.9 X 24 8/10 PLY	27 psi	(186 kpa)	
		21.5L X 16.1 -8/10 PLY	17 psi	(117 kpa)	
		540/65 R24	13 psi	(90 kpa)	
	REAR	28L X26 - 10/12 PLY	16 psi	(110 kpa)	
		800/65 R32	12 psi	(83 kpa)	
		23.1 X 26 - 8/10 PLY	12 psi	(83 kpa)	
		18.4 X 38 - 8/10 PLY	20 psi	(186 kpa)	
LFC 1800	FRONT	21.5L X 16.1 - 8/10 PLY	17 psi	(83 kpa)	
		14.9 X 24 - 8/10 PLY	19 psi	(131 kpa)	
	REAR	18.4 X 38 - 8/10 PLY	20 psi	(138 kpa)	
		23.1 X 26 - 8/10 PLY	12 psi	(83 kpa)	

Correct sprocket used on clutch	<input checked="" type="checkbox"/>
30 Tooth ----- 23.1L x 26 AWT	
32 Tooth ----- 28L x 26 AWT	
33 Tooth ----- 28L x 26 R-1	
33 Tooth ----- 23.1x26 R-1	
34 Tooth ----- 23.1x26 R-2	
36 Tooth ----- 18.4x38 R-1	
37 Tooth -----800/65R32 R-1W	
Locking collars on bearings tight	
Wheel Bolts are torqued	
REAR ----- 450 ± 25 ft.lbs	
FRONT ----- 135 ± 15 ft.lbs	
ONLY LUG TIRES - Ensure tread on top of tire points to the rear	

Suggested Completion Time = 15 min.

Signature: _____

Actual Time _____

MAIN DRIVE



All set screws on main drive shaft are tightened. (5/32" allen)	
Quick pin in place to lock pump drive mount assy down.	
Ensure proper tension on pump drive chain	
Ensure clutch idler & pump sprockets are all aligned	

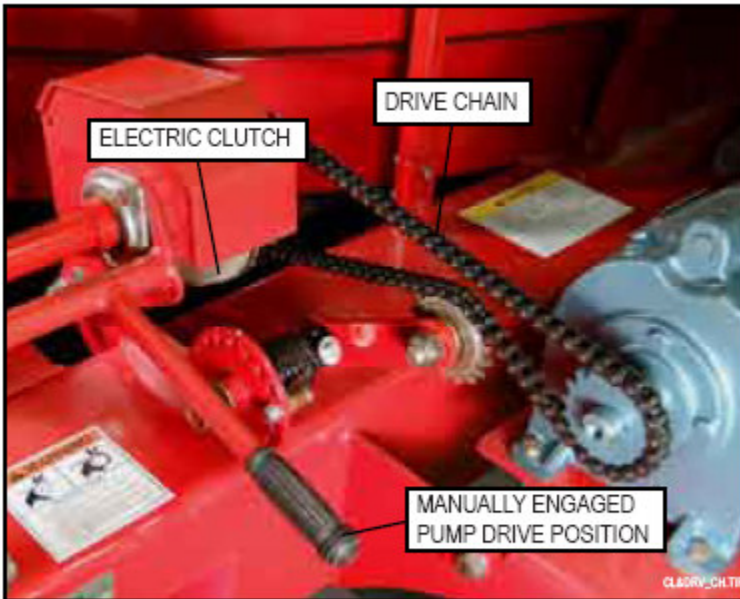


Figure 4.4 - Electric Clutch & Drive Chain

HITCHES




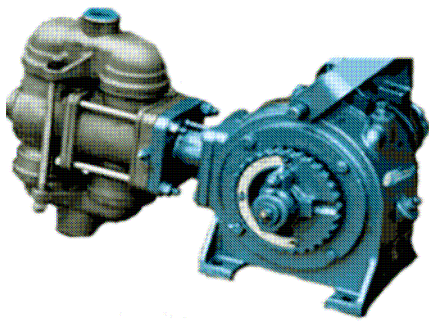
Correct safety chain is attached properly / 40,500 #	
Hitch pin installed on holder located on front hitch	
5th wheel greased	
All fasteners are tightened	
All paint damage is repaired.	
5th wheel wear pad is in place.	
Maximum 1/8" gap on 5th wheel.	

Suggested Completion Time = 10 min.

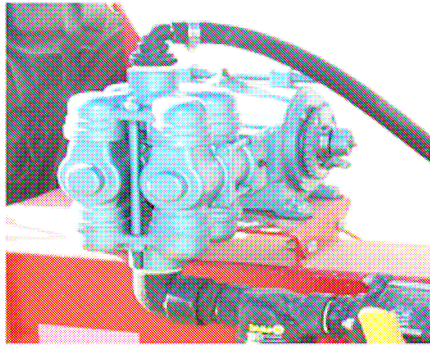
Signature: _____

Actual Time _____

PLUMBING/PUMPS	
All hoses routed neatly with no kinks	
Hoses not rubbing on any moving parts (ie Piston pump calibration disc)	
All hose holders are tight	
All fittings are tight and machine is free of leaks	
All caps and plugs installed complete with crimped cable	
Proper oil level in pump	
PISTON PUMP ----- SAE 90W Gear oil	
TRANSFER PUMP ----- SAE 10W-30	
Pump fasteners tight	
Pump sprocket aligned properly and chain tightened	
Proper oil level in engine (Transfer Pump only)	



Single Piston Pump



Double Piston Pump



Figure 4.19 - Optional Transfer Pump
Optional transfer pump

Suggested Completion Time = 10min.

Signature: _____

Actual Time _____

WIRING



All harnesses routed neatly and terminals hooked up	
All Safety lights work	
Clutch control harness runs down right side of machine and tied to chain links (Piston only)	

TANKS/SADDLE/CART



Tie down straps are snug.	
Emergency rinse tank in place.	
Proper ladder to match tank (1800 ladder has 2 bends, short: 2400 & 3000 ladder has 3 bends, long.	

Suggested Completion Time = 10 min.

Signature: _____

Actual Time _____

Final Check



All wiring connections hooked up correctly (must have adequate amps & volts):	
Hitch pin is placed in holder on hitch	
Red and amber lights turn off and on	
Single clutch switch operates clutch properly	

LIST OF COMPONENTS IN THE BAG:

BASE UNIT:	
LFC Operator's Manual	
Metering Pump Operator's Manual	
Honda Engine and Banjo Pump Operator's Manual (Transfer Pump Option only)	
Single Clutch Switch Box and Power Cable - P/N 3120-65-27, 3120-65-21 (Piston Pump only)	
NYLON TIE KIT - P/N 1850-99 (TBHD Configuration only)	
HARN CULT CL 3RD TANK c/w NYLON CLUTCH TIES - P/N 3120-97-02 & 1850-41	

Optional harness Package

P/N	DESCRIPTION	QTY
3120-97-02	CA EXT 2 MALE/2F WTHRPK	1
1850-41	TIE NYL MAIN CL ORN	2
1850-10	TIE, NYL, 7 IN BK	20
5505-29	HS RBR 1-1/4 GEN SERV	35 ft
3325-85	F CPLG (CAM LOCK) 1-1/4HB	1
3320-34	M CPL CAM LOCK 1 FPT	1
3325-49	FTG POLY 1-1/4HBX1NPT	1
2030-31	CLP HOSE #24	2
1850-15	TIE NYL 11 IN BK	20

Suggested Completion Time = 10 mni.

Signature: _____

Actual Time _____