

BOURGAULT *Pursuing Perfection*

9800 PRE-DELIVERY INSPECTION

DATE _____

DEALERSHIP _____

MODEL SIZE _____

SERIAL # _____



Trips

230 # Single	<input type="checkbox"/>
330 # Single	<input type="checkbox"/>
330 # Double	<input type="checkbox"/>
450 # Double	<input type="checkbox"/>
500 # Double	<input type="checkbox"/>
600 #Double	<input type="checkbox"/>

Spacing

8"	<input type="checkbox"/>
10"	<input type="checkbox"/>
12"	<input type="checkbox"/>
15"	<input type="checkbox"/>

Optical Flow Sensors

N/A	<input type="checkbox"/>
S/S Single Run	<input type="checkbox"/>
S/S Full Run	<input type="checkbox"/>

Auto Clutch Switch

N/A	<input type="checkbox"/>
Installed	<input type="checkbox"/>

Aux. Blower

N/A	<input type="checkbox"/>
Installed	<input type="checkbox"/>

Packers

2" Rubber	<input type="checkbox"/>
2-1/4" Steel	<input type="checkbox"/>
3" Rubber	<input type="checkbox"/>
3-1/2" Steel	<input type="checkbox"/>
4" Rubber	<input type="checkbox"/>
4-1/2" Steel	<input type="checkbox"/>
5-1/2" Pneumatic	<input type="checkbox"/>
20" Gang Mtd.	<input type="checkbox"/>
20" Ind. Mtd.	<input type="checkbox"/>

Harrows

3 Bar	<input type="checkbox"/>
4 Bar	<input type="checkbox"/>
48" Harrows	<input type="checkbox"/>

Mudscrapers

N/A	<input type="checkbox"/>
Installed	<input type="checkbox"/>

Granular Kit

N/A	<input type="checkbox"/>
Installed	<input type="checkbox"/>

Tools Required:

- 3/4" Torque Wrench
- 1-5/16" socket
- 1-1/8" socket
- 1-1/16" deep socket
- 1-1/2" socket
- Tape Measure

- 1/2" Torque Wrench
- 3/4" socket
- 3/4" flat wrench
- 7/8" deep socket
- Tire Pressure Guage

Trip Assemblies

On Unit Checks	<i>check</i>
All springs are installed with the hook ends facing the tower. See figure 1	
Eye bolts are tightened to proper specs	
230 lb single spring trip - snug + 3 threads from the bottom	
330 lb single spring trip - snug + 7/8"	
330 lb double spring trip - snug + 2 or 3 threads	
450 lb trip - snug + 3 thr	
500 lb trip - snug + 3 threads showing at bottom	
600lb trip - snug + 2 or 3 threads	
All bolts are tight	
All trips are in proper locations. +/- 1/4", randomly check 5 locations to verify	
For 230-500lb trips - The torque for the trip pivot bolts (260 ± 10 ft.lbs) have been verified for 5 trips (1-5/16)	
For 600lb trips only - The torque for the rip pivot bolts (350 ± 15 lbs) have been verified for 5 trips	
The torque for the Shank Mounting Bolt (minimum of 200 ft.lbs) have been verified	
For 600lb trips only - The torque for the Shank Mounting Bolt (minimum of 350 ft.lbs) have been verified for 5 trips	



Figure 1 Trip Spring Orientation

Suggested Completion Time = 30 min

Signature: _____

Actual Time _____

HYDRAULICS	Check Off
Magnetic strip is on the quick shift adjustment properly (#'s to the front)	
All set screws on quick shift pushrod are secure	
Identification tags have been attached to couplers	
Link bolts must turn freely by hand. See Figure 1	
Steel hyd lines are not bent or kinked	
All plastic line hold downs are tight and fastened with a lock nut	
Hyd hose is tied to Winglift Cylinders on tie rod type cylinders	

Cylinder Locations

Depth Cylinder	9800-28		9800-35&36	
Right M.F	3301-46		3301-46	
Right I.W.	3301-45		3301-45	
Right O.W	N/A		N/A	
Left M.F	3301-47		3301-47	
Left I.W.	3301-48		3301-48	
Left O.W.	N/A		N/A	
Wing Cylinder				
Right I.W	3300-62		3300-54	
Right O.W.	N/A		N/A	
Left I.W.	3300-62		3300-54	
Left O.W.	N/A		N/A	

Suggested Completion Time = 15 min

Signature: _____

Actual Time _____

Packers

General (All Packer Styles)	CHECK OFF
Pillow block bolts are tightened to 75 ft lbs., (+10 / -0 ft lbs). <i>See Fig. 2</i>	
Packer wheels line up with shanks	
Nut side of packer gangs not facing one another	

Rubber Capped Packers	CHECK OFF
Rubber is in place and has no "peeled" edges	

Pneumatic Packers	CHECK OFF
Verify (5 random) tires for psi specification (17 ± 3 psi)	
Check for cuts or defects in tires	

Steel Packers	CHECK OFF
Mudscrapers (if applicable) installed at 1/4" to 3/8" gap away from wheel surface	
Ensure mudscrapers are installed straight.	
Verify that mudscraper bolts have been tightened	

Harrows/Packers/Arms	
Quick adjust harrow arms function in all positions	
Harrows sit level and parallel to the frame	
Packer wheels aligned with shanks	
Quick detach harrow brackets detach easily from harrow arms.	
Pins can be turned by hand. Figure 3	
U-bolts are not overtightened and kinking harrow tubing	

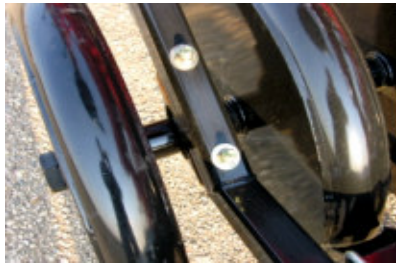


Fig. 2 Pillow Block Bolts (Torque to 75 ft-lbs)
(Check 5 randomly)



Figure 3 Packer Mounting Pin

Suggested Completion Time = 15 min

Signature: _____

Actual Time _____

9800 Wheel Torques and Wheel Pressure

Right Gauge Wheel	9.5x15 FI	54 psi	160 ft/lbs
Right Wing Single Wheel	12.5x15 FI	42 psi	160 ft/lbs
Right Wing Outer Bogie	9.5x15 FI	42 psi	160 ft/lbs
Right Wing Inner Bogie	9.5x15 FI	42 psi	160 ft/lbs
Right MF Outer Bogie	11Lx15 FI	60 psi	160 ft/lbs
Right MF Inner Bogie	11Lx15 FI	60 psi	160 ft/lbs
Left MF Inner Bogie	11Lx15 FI	60 psi	160 ft/lbs
Left MF Outer Bogie	11Lx15 FI	60 psi	160 ft/lbs
Left Wing Single Wheel	12.5x15 FI	42 psi	160 ft/lbs
Left Wing Inner Bogie	9.5x15 FI	42 psi	160 ft/lbs
Left Wing Outer Bogie	9.5x15 FI	42 psi	160 ft/lbs
Left Gauge Wheel	9.5x15 FI	54 psi	160 ft/lbs

CASTORS & AXLES

No excess gap between castor pivot axle wear plates
(.060" max) [approx. thickness of a quarter]

All screw jacks are snug and lock nut is tight.

Anti turn bolt is seated into castle nut and has washers and lock nut

All bolts on castor assemblies are tight

Axle/Castor Dustcaps are dent free (max dent is 1/8")

Axle end caps are tight on the axle shaft tabs

Safety chain (40500lb) has been properly attached

Suggested Completion Time = 15 min

Signature: _____

Actual Time _____

AIR KITS

Primary Air System

CHECK OFF

Ensure that the Quick Coupler can be easily removed by hand	
Over center latches installed correctly, move freely, lock pin fits	
Approx 2 inches of pre-load on bellows connection for both lines Figure 2	
No Excessive air leaking at primary manifold ports	
Hose clamps are tightened on Black Hose (Primary stands)	

Tertiary Air System

CHECK OFF

Tertiary hoses are fastened securely in manifold heads	
Tertiary hoses are not touching any steel hydraulic lines.	
No excess uphill run in tertiary hoses (MRB's exception to the rule) Figure 1	
Tertiary hoses have been attached to seedboots with hose clamp.	
Tertiary hoses are fully seated in secondary manifold (check 2)	

Granular Kit (Optional)

CHECK OFF

Granular deflectors are in the correct location	
Granular transfer line is level with the frame	
Granular hoses are cut to the correct lengths (10' minimum)	

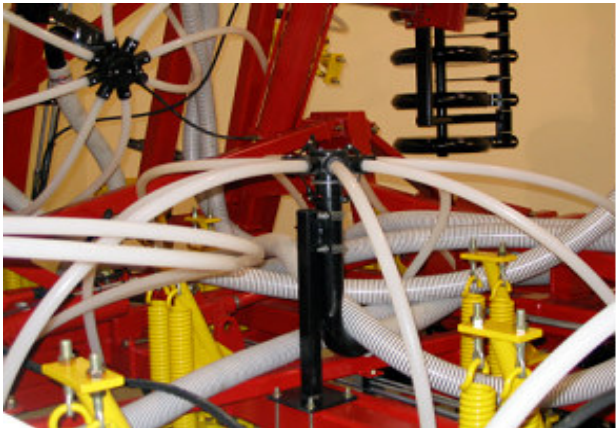


Figure 1



Figure 2

Suggested Completion Time = 15 min

Signature: _____

Actual Time _____

ELECTRICAL

Safety Lights

	Check Off
All Safety Lights work	
Safety Lights are Secure	
Amber lights are seated properly in holders	

Seeder Harness

	Check Off
Connections match to corresponding seeder unit	
Excess cable is wrapped up neatly out of harms way	
Cover caps are on all ends of the wiring harness (weather protection)	

Blockage System (Optional)

	Check Off
Blockage Module boxes are mounted with the connections on under-side. <i>See Fig. 9</i>	
Sensors are mounted on tubes with wire directed away from the manifold. <i>See Fig. 10</i>	
Single run sensors are installed on the longest hose for each manifold	
Sensors wires are not installed by Quick Inspection Manifold handles	



Fig. 9 Blockage Module



Fig. 10 Blockage Sensor Mounting

Suggested Completion Time = 15 min

Signature: _____

Actual Time _____

Depth Sight/Auto Clutch

AUTO CLUTCH SWITCH (optional)	Check Off
Auto clutch mount is installed perpendicular to Upper Horizontal Arm	
Pivot arm is mounted parallel to Upper Horizontal Arm	
Ensure that with the unit completely lowered, the roller on the limit switch is not touching the pivot arm	
Ensure that with the unit completely raised, the pivot arm does not touch the Upper Horizontal Arm or the bolts that clamp the switch mount onto the Horiz. Arm.	
Ensure that with the unit completely raised, the tension of the spring is adjusted, to hold the limit switch engaged.	
All fasteners are tightened appropriately	
All paint damage is repaired	



Fig. 11 Auto Clutch Switch

Suggested Completion Time = 10 min

Signature: _____

Actual Time

Section 8 - Final Check

FINAL CHECK OFF

	<i>CHECK</i>
Hydraulics	
Ensure there are no hydraulic leaks	
Exposed cylinder shafts are greased (if machine is sitting on lot for extended time)	
Dust seal is seated properly on poppet valve	
Various	
Wash the unit, removing all road debris (road salt and tar)	
Check for aesthetic defects and shipping damage. Repair or replace damage	

Suggested Completion Time = 30 min

Signature: _____

Actual Time