

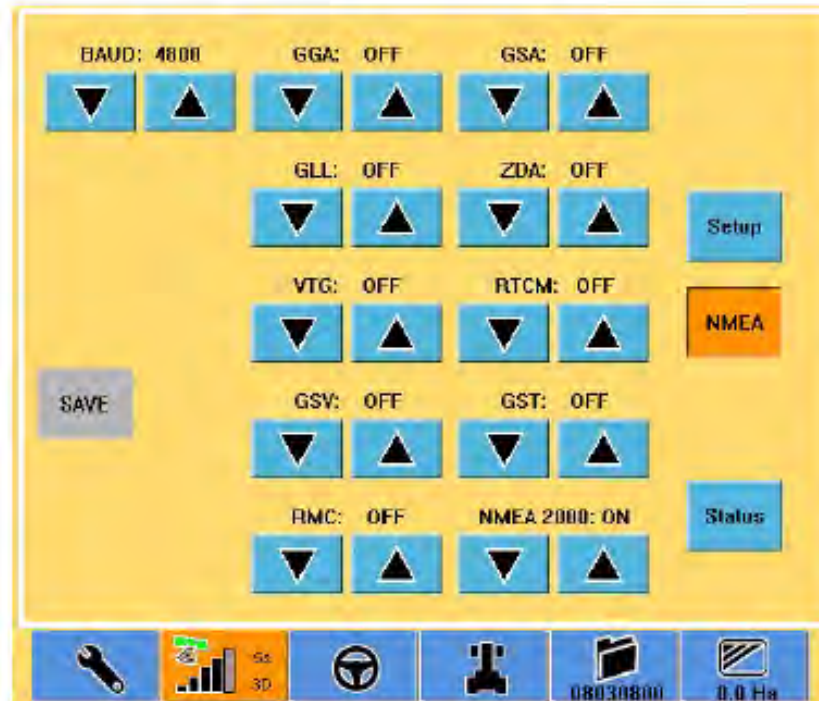
## **Outback S3 to Topcon X20**

- **The following pages detail the procedure to get GPS signal from the Outback S2 for the Topcon X20.**
- **This will be required for Variable rate control, Guidance, and/or sectional control.**

## Outback S3 NMEA settings

### Changing Default Settings

The default communication settings can be changed by touching the NMEA button on the GPS screen and the NMEA Setup screen appears. After making any changes, touch the Save button.



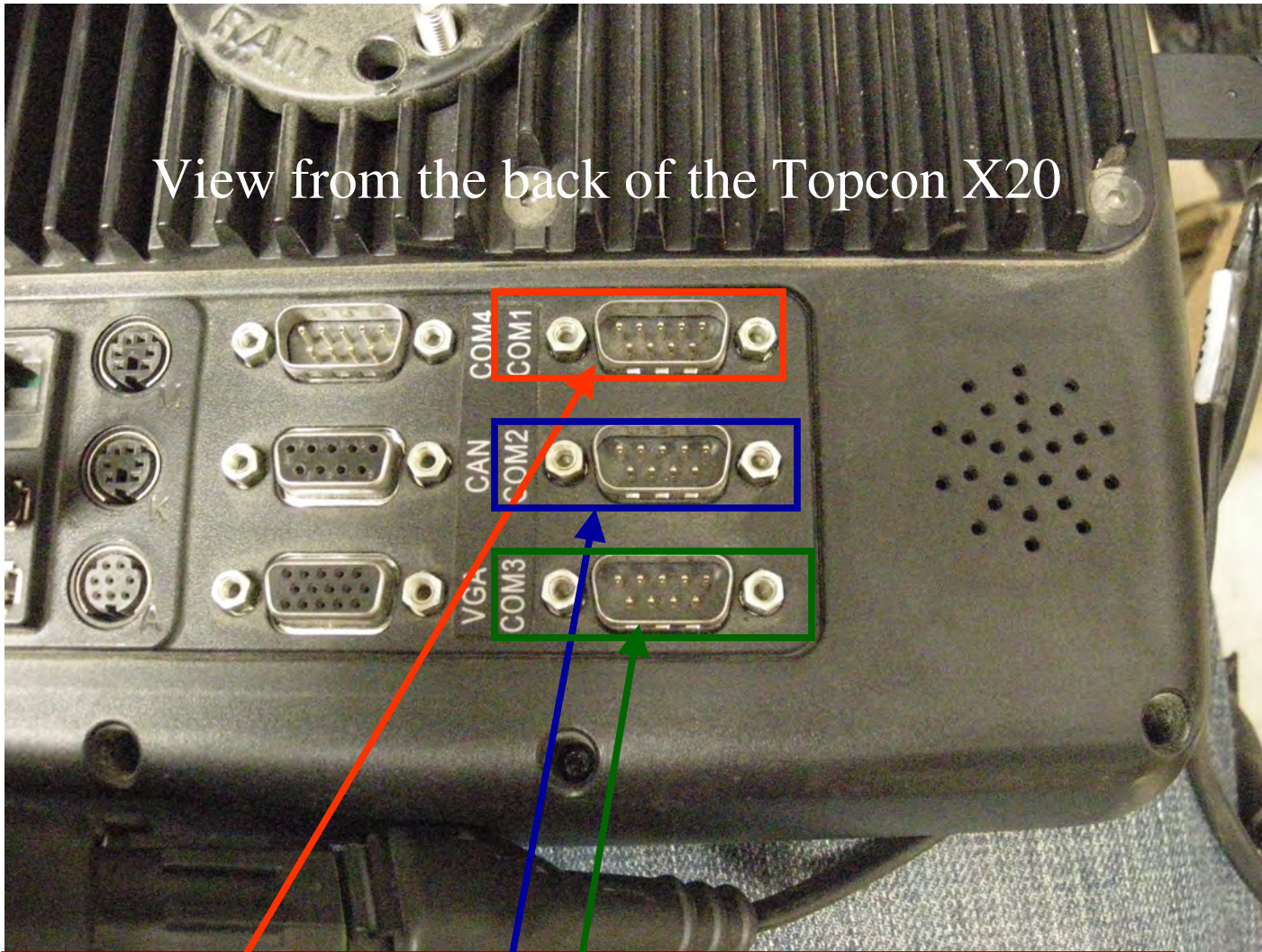
The GGA and  
VTG must be  
ON

The following options are available: (Default options are in bold)

- NMEA PORT BAUD: 57600, 19200, 9600, **4800**.
- GGA RATE: OFF, 2 Hz, **1 Hz**, 5 Hz, 10 Hz.
- GLL RATE: **OFF**, 2 Hz, 1 Hz, 5 Hz.
- VTG RATE: OFF, 2 Hz, **1 Hz**, 5 Hz.

The Baud rate  
should be 19200

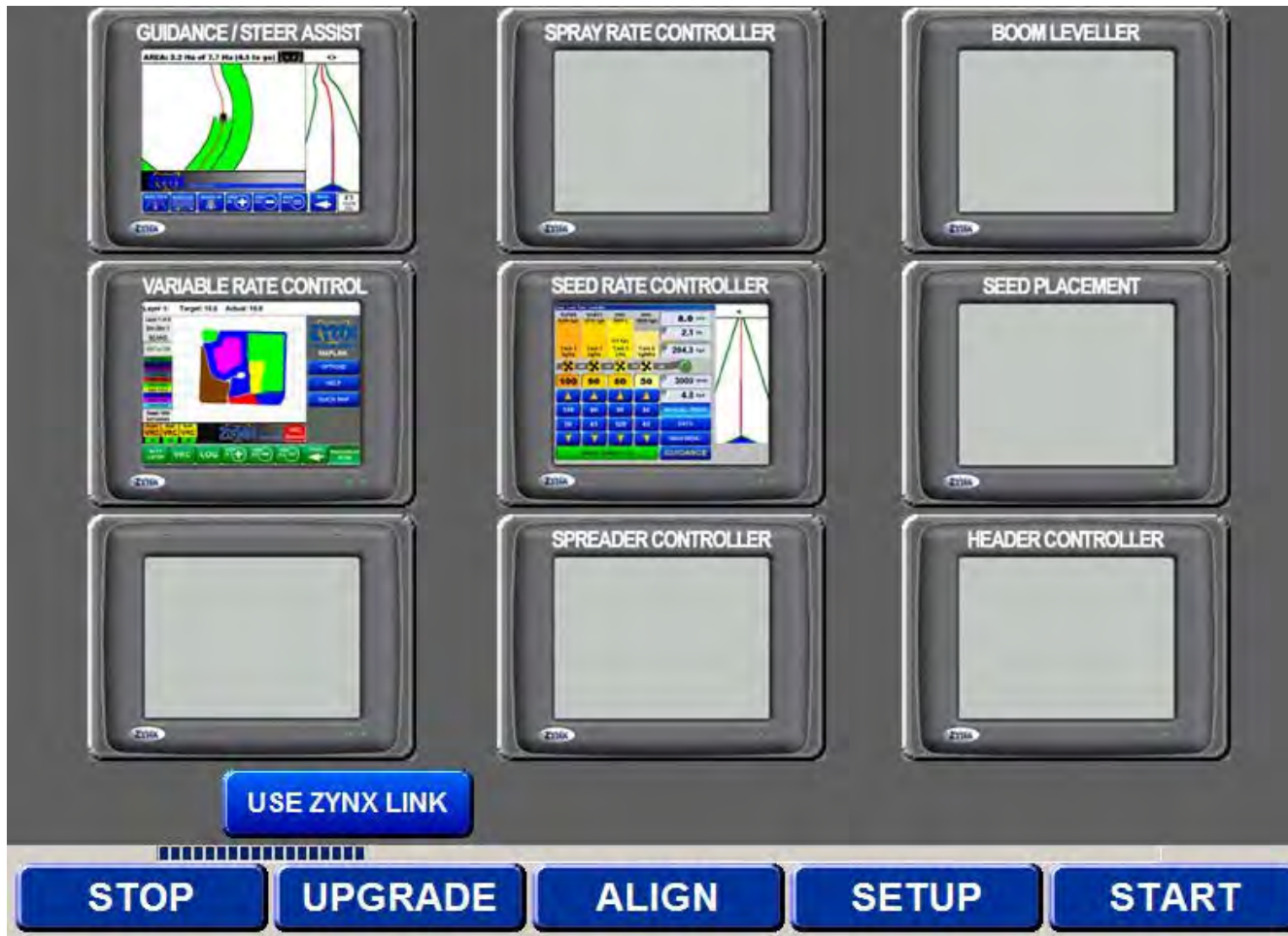
## View from the back of the Topcon X20



**All serial cables must be connected to specific COM ports.**

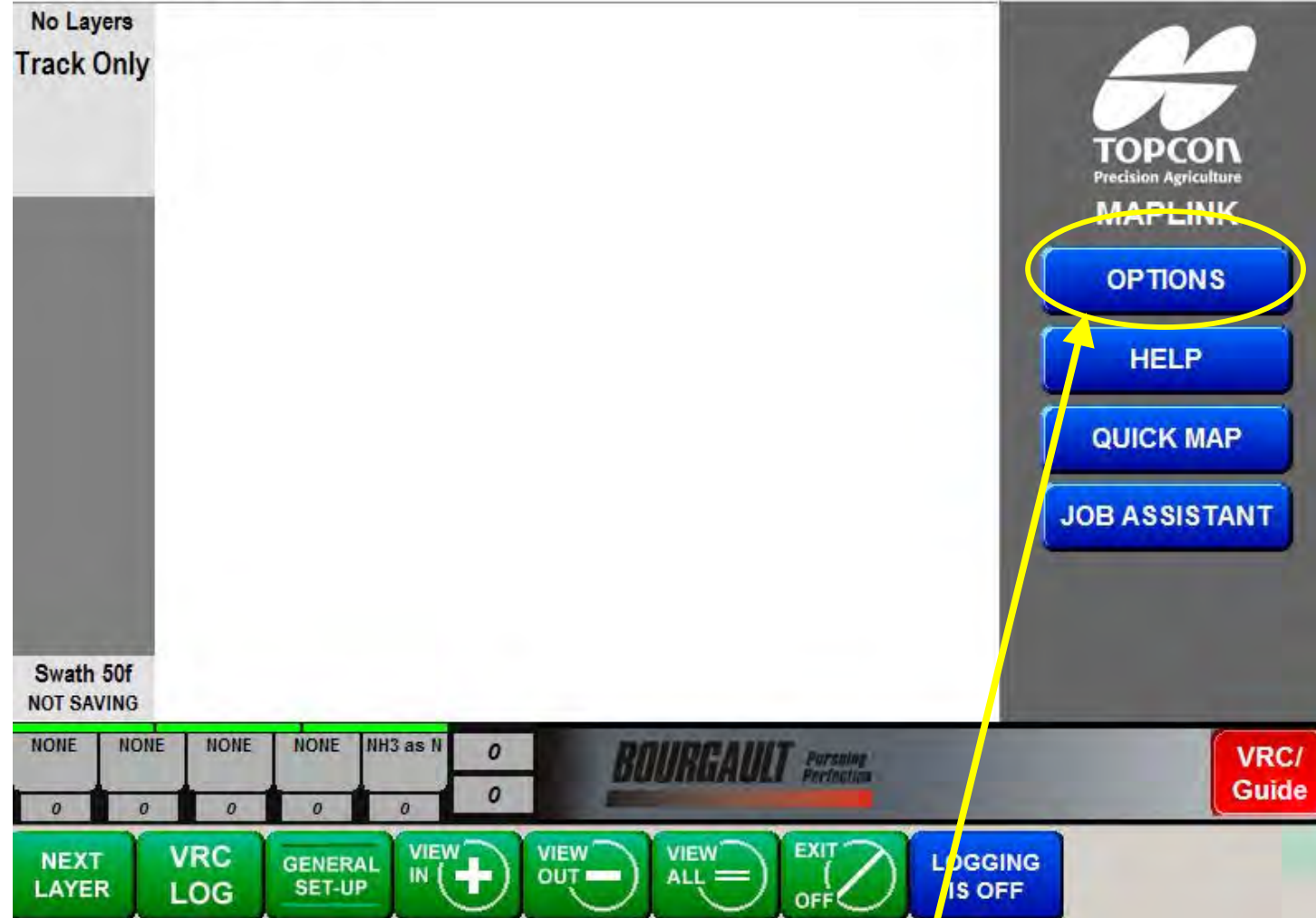
- **Guidance to COM1 (to Serial port on Outback S3)**
- **Variable Rate Control to COM2 (to Serial port on Outback S3)**
- **Seed Rate Control to COM3 (to SRC interface box)**





**Power up the X20 and select Guidance/Steer Assist, Variable Rate Control and Seed Rate Control.**

## Plotting On Screen Only



Select the Options tab in the Maplink program.

## Plotting On Screen Only

No Layers  
Track Only

**General Setup Options**

GPS | Config | Folder | VRC | Logging | Plotting | Units | Other

GPS Connection

COM Port

- Simulation
- COM1
- COM2
- COM3
- COM4
- COM5
- COM6
- COM7
- COM8

Baud rate

- 4800
- 9600
- 19200
- 38400
- 57600
- 115200

Show GPS Info.

Enable Advanced

ABOUT Help CLOSE

Swath 75f  
NOT SAVING

NONE NO

0 0 0 0 0 0

**VRC/ Guide**

NEXT LAYER VRC LOG GENERAL SET-UP VIEW IN (+) VIEW OUT (-) VIEW ALL (=) EXIT OFF (X) LOGGING IS OFF

**Select COM2 for  
Maplink**

**Select 19200 for the Baud rate**

## Plotting On Screen Only

No Layers  
Track Only

Swath 50f  
NOT SAVING

NONE NONE NONE NONE NH3 as N 0  
0 0 0 0 0 0

**BOURGAULT** Pursuing Perfection

TOPCON  
Precision Agriculture  
MAPLINK

OPTIONS  
HELP  
QUICK MAP  
JOB ASSISTANT

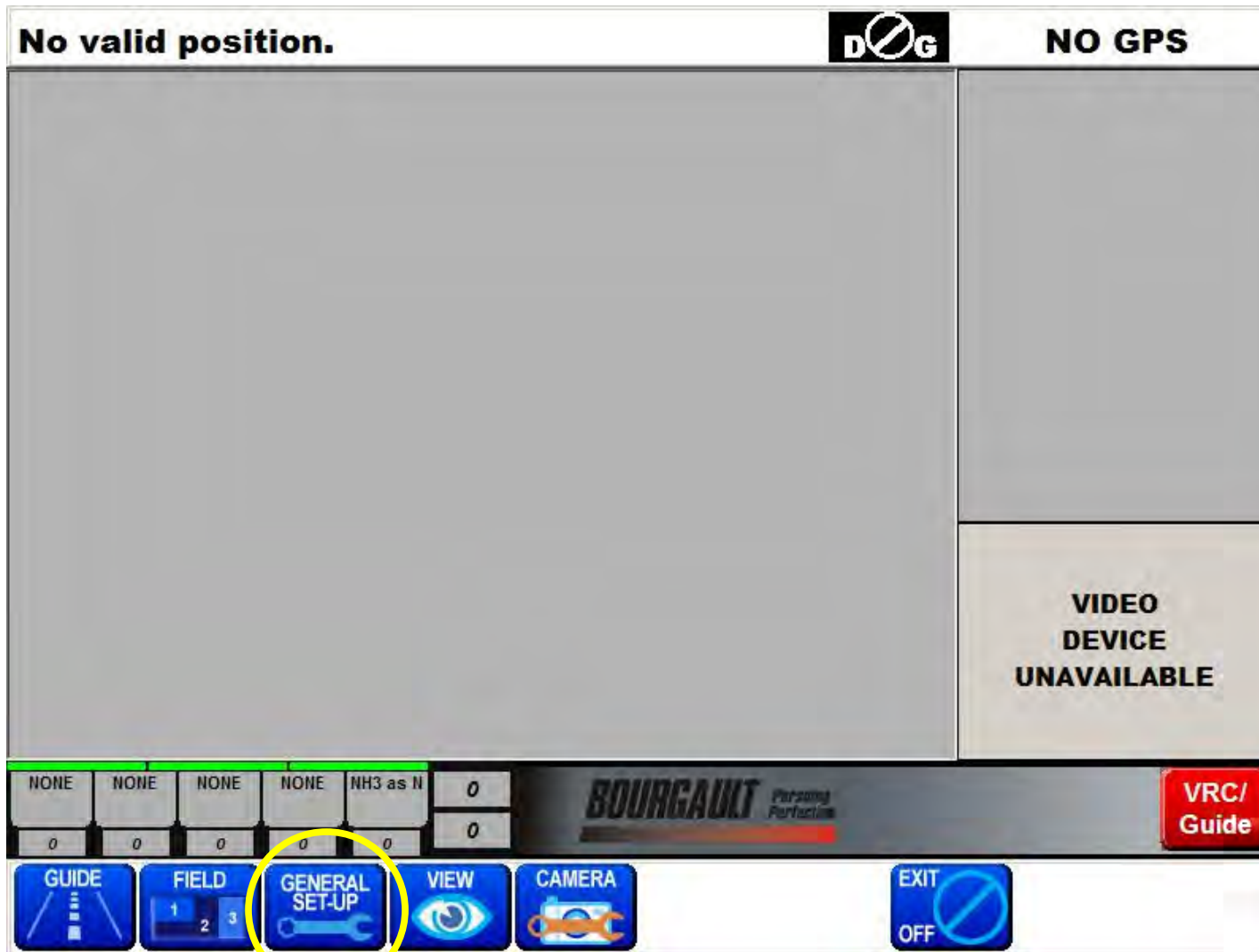
VRC/  
Guide

NEXT LAYER VRC LOG GENERAL SET-UP VIEW IN + VIEW OUT - VIEW ALL = EXIT OFF LOGGING IS OFF



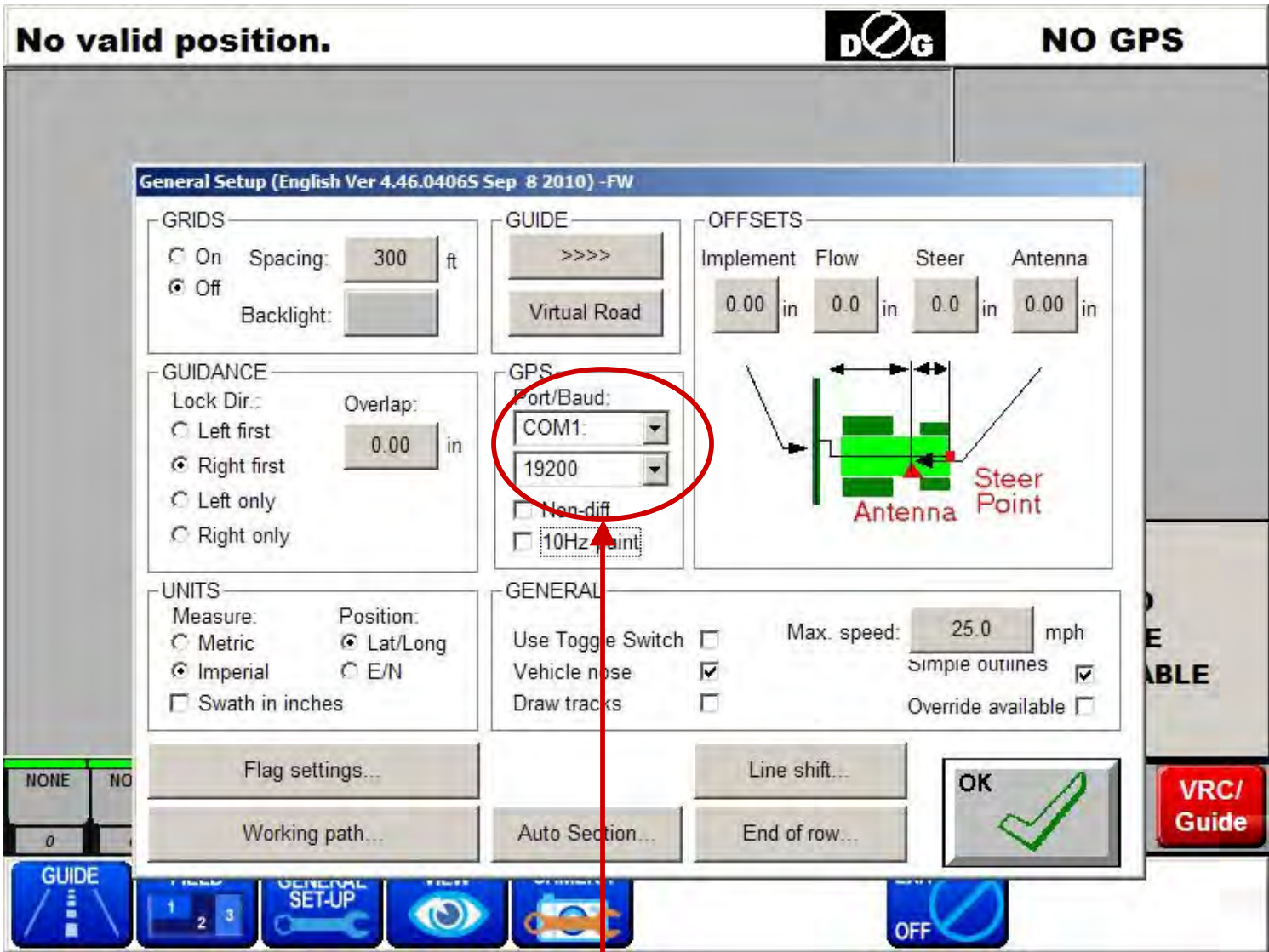
Press the **VRC/ Guide** tab top cycle to the Guidance program.





**Press the General Set-up tab**





Select COM1 and 19200 as the Baud rate for Guidance

## Plotting On Screen Only

No Layers  
Track Only



TOPCON  
Precision Agriculture

MAPLINK

OPTIONS

HELP

QUICK MAP

JOB ASSISTANT

Swath 50f  
NOT SAVING

NONE	NONE	NONE	NONE	NH3 as N	0
0	0	0	0	0	0

**BOURGAULT** Pursuing Perfection

VRC/  
Guide

NEXT  
LAYER

VRC  
LOG

GENERAL  
SET-UP

VIEW  
IN +

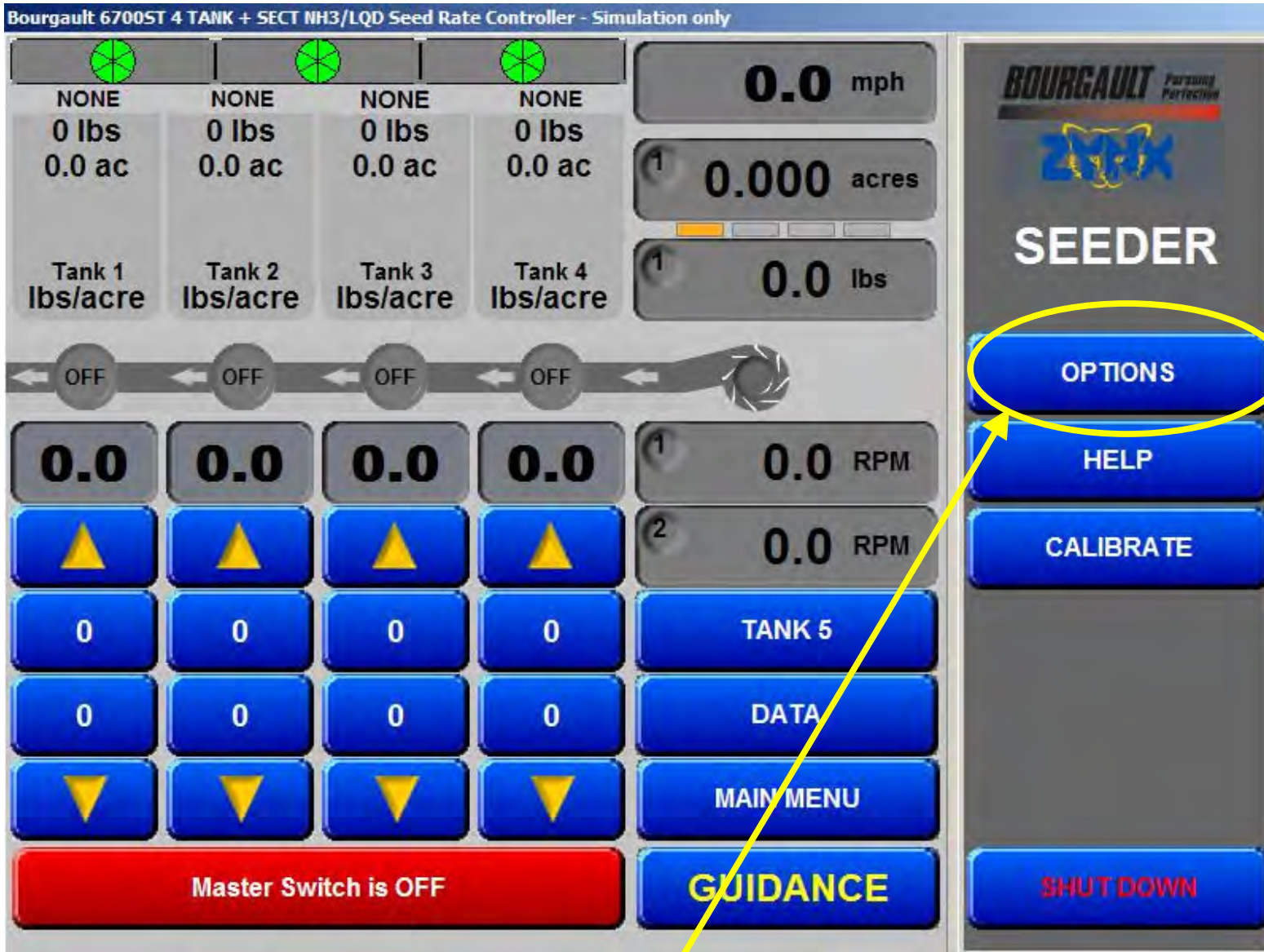
VIEW  
OUT -

VIEW  
ALL =

EXIT  
OFF

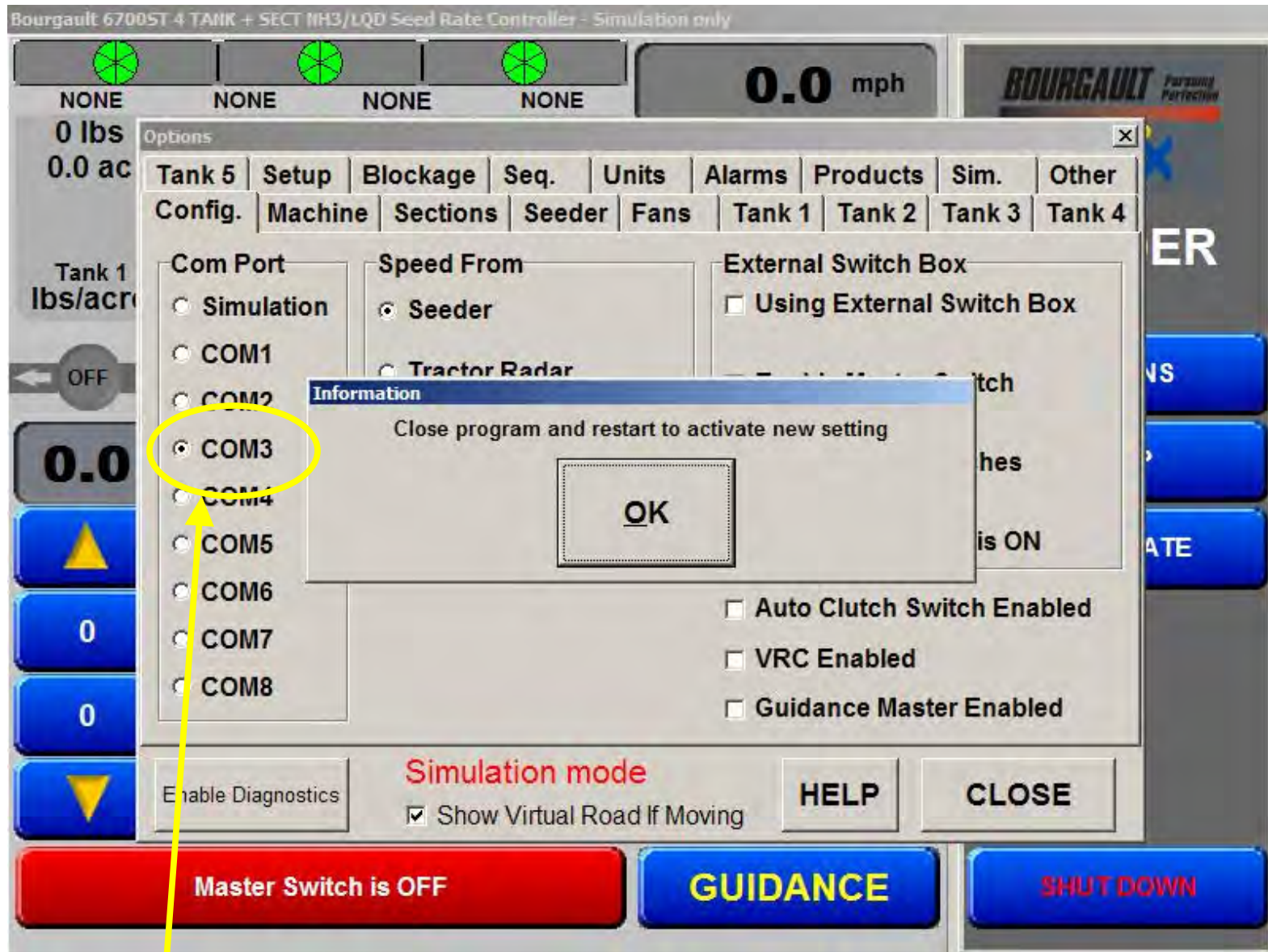
LOGGING  
IS OFF

**Touch this area to access the Seed Rate  
Controller program**



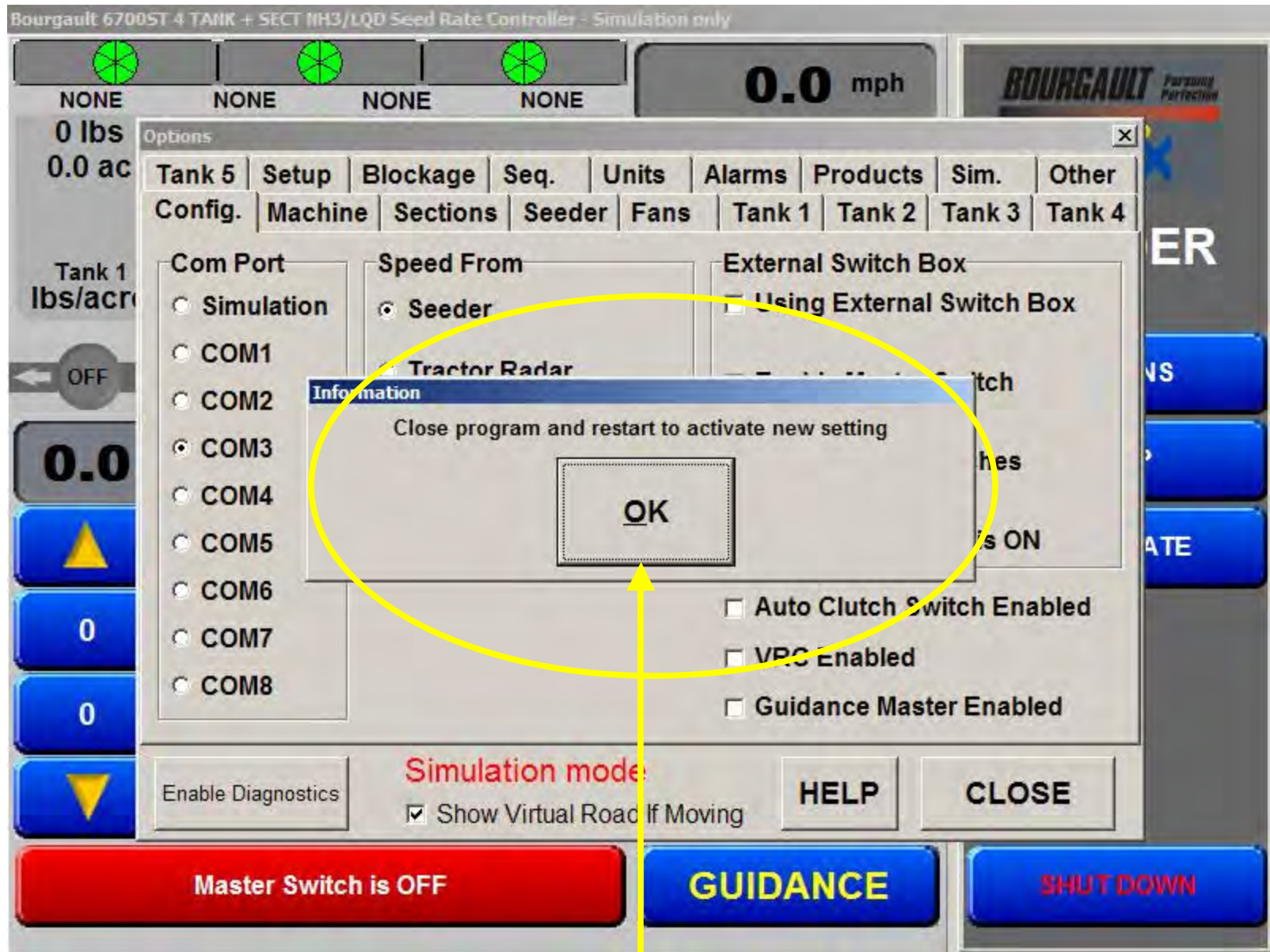
**Touch the Options tab of the Seeder program**





Select COM3 for the Seed Rate Controller





**The X20 programs must be closed and restarted to retain the COM settings**