

LFC 2000 PRE-DELIVERY INSPECTION

DATE _____

DEALERSHIP _____

MODEL SIZE _____

SERIAL # _____



Configuration	Tow-Behind <input type="checkbox"/>		Rear Tires	28Lx26 AWT <input type="checkbox"/>	
	Leading <input type="checkbox"/>			28Lx26 RICE <input type="checkbox"/>	
	Both <input type="checkbox"/>				
Pump	Single Piston <input type="checkbox"/>		Rear Tow Hitch	Yes <input type="checkbox"/>	
	Double Piston <input type="checkbox"/>			No <input type="checkbox"/>	
	Diaphragm <input type="checkbox"/>		A/S Monitor Harness	Yes <input type="checkbox"/>	
Transfer Pump	Yes <input type="checkbox"/>		Extension Pkg.	No <input type="checkbox"/>	
	No <input type="checkbox"/>		A/S Clutch Harness	Yes <input type="checkbox"/>	
Pump Control	Single Shoot <input type="checkbox"/>		Extension Pkg.	No <input type="checkbox"/>	
Switch Harness	Double Shoot <input type="checkbox"/>		WTP Hydraulic	Yes <input type="checkbox"/>	
	N/A <input type="checkbox"/>		Extension Pkg.	No <input type="checkbox"/>	
A/S Fan Hyd. Pkg.	Single <input type="checkbox"/>				
	Double <input type="checkbox"/>				
	N/A <input type="checkbox"/>				

Tools Required: 3/4" Torque Wrench
1-1/8" Socket

1/2" Torque Wrench
7/8" Deep Socket
Tire Pressure Gauge

SECTION 1 - Tires & Drive

TIRES				Checked By
Correct sprocket used on clutch				
28L x 26 AWT		48 Tooth		
28L x 26 Rice		50 Tooth		
Torque rear wheel bolts to 450 ft-lbs +/- 25 ft-lbs		Measured Torque		/
Torque front wheel bolts to 135 ft-lbs +/- 15 ft-lbs		Measured Torque		/
Tires	Tire Option	Wheel Torque	Tire Pressure	
Rear	28L - 26 Rice	450 +/- 25ft.lbs.	18 psi	
	28L - 26 AWT		18 psi	
Front	16.5L - 16.1 Softrac	135 +/- 15ft.lbs.	20 psi	
ONLY LUG TIRES - Ensure tread on top of tire points to the rear				

DRIVE	Checked By
Drive chain tightened and aligned properly	
Locking collars on bearings are tight.	
Jackshaft Pillowblocks are tight and aligned properly	

Suggested Completion Time = 20 min

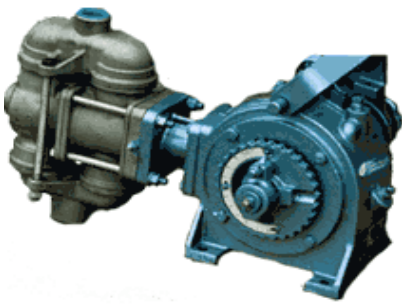
Signature: _____

Actual Time

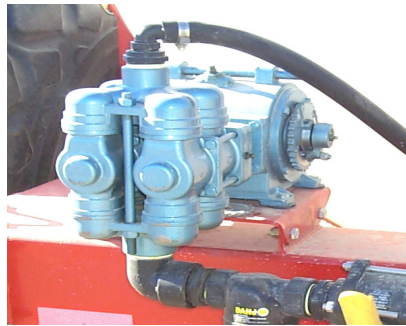
SECTION 2 - Plumbing

PLUMBING

PLUMBING	Checked By
All hoses routed neatly with no kinks	
Hoses not rubbing on any moving parts (ie Piston pump calibration disc)	
All hose holders are tight	
All fittings are tight and machine is free of leaks (refer to leak testing procedure)	
All caps and plugs installed complete with crimped cable	
Pump adjustment wrench secured to pump plate with quick locking pin (Piston pump only)	
Breather plug installed in top fill hole on pump (Piston pump only)	
Pump fasteners tight	
Pump sprocket aligned properly and chain tightened	



Single Piston Pump



Double Piston Pump



Diaphragm Pump

WIRING/HYDRAULICS

WIRING/HYDRAULICS	Checked By
All terminals neatly wired and hooked up	
All Safety lights work	
No kinks in the case drain line (Leading only)	
Rate control harness runs down left side of machine and tied up (Diaphragm only)	
Clutch control harness runs down left side of machine and tied up (Piston only)	
Calibration tag attached to flow meter (Diaphragm only)	

Suggested Completion Time = 15 min.

Signature: _____

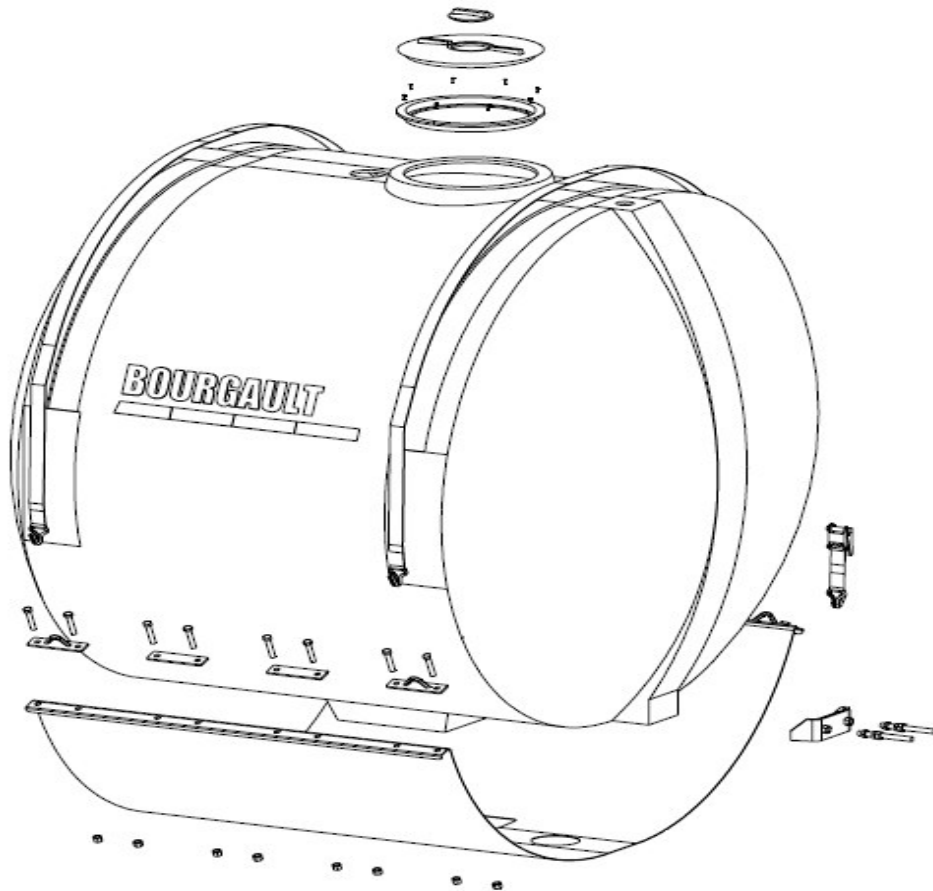
Actual Time _____

SECTION 3 - Tank

TANKS/SADDLE/CART

Checked By

All fasteners are tight holding the saddle to the cart	
Ladder installed and fasteners tightened	
Emergency rinse tank in place.	
Tank end clamps are tight	
Straps are tight keeping the tank from moving in the saddle	
Lid flange screws are tight and lid seals well	
Tank is free of any foreign material in it that may clog the filter on start-up	



Suggested Completion Time = 10min.

Signature: _____

Actual Time _____

SECTION 4 - Final Inspection

Final Inspection

	Checked By
Check for aesthetic defects and shipping damage. Replace damaged parts and touch up paint as required.	
Electric clutches hooked up and function correctly. Piston pump requires single clutch switch. Diaphragm pump clutch is controlled by boom #1 switch on 844 controller.	
All wiring connections hooked up correctly:	
Safety chain (40,500lb) is on with safety netting	
Hitch pin is placed in holder on hitch	
Grease machine as per operator's manual.	
Red and amber lights turn off and on	
Oil levels are correct in pumps. Piston pump SAE 90W Gear Oil Diaphragm pump. SAE 10W - 40 SYNTHETIC OIL Transfer pump. SAE 10W - 30	
Ensure monitor functions correctly and is set for correct nozzle spacing (Diaphragm pumps)	
Go over LFC operations and operators manual with customer.	

Suggested Completion Time = 30 min.

Signature: _____

Actual Time