

BOURGAULT

X30 Apollo | System



INGENUITY.

SIMPLICITY.

DURABILITY.

 **TOPCON**
Precision Agriculture

www.bourgault.com



X30 Apollo System Upgrading Monitor Software & ECU Firmware Version 3.24.509





Tanks that have been updated with an ASC DUAL BOOM RETROFIT KIT for 2018 will require software and firmware as listed below. If software and firmware are not correct you may see a warning on the X30 that there is an Apollo Firmware mismatch.

[illegible]



Updating X30 Software

The files may also be downloaded, listed below are the instructions how to download.
Please go to our download site at **download.bourgault.com**.
Enter code | **3.24.509**
Press the submit code button

A screenshot of a web browser window showing the Bourgault File Download page. The address bar displays "http://download.bourgault.com". The page has a red header and a white main area. The text "Enter Download Code:" is followed by the code "3.24.509" and a "Submit Code" button.

http://download.bourgault.com

Enter Download Code:

3.24.509

Submit Code



1. Download zip file attachment to a folder on your computer. File name will be 3.24.508zip
2. Extract files from the zip and put onto an empty thumb drive.
3. These are the files on the thumb drive make sure they are extracted like they are below do not leave in original file folder. There will be additional backup folders once used to upgrade a monitor as one will be created each time an Upgrade is performed. These backup folders will not affect the upgrade, however may need to be removed once thumb drive is full. Leave the two folders at the top as they are. These are for the 3420 Drill fold ECU only.

Name	Type	Compressed size	Password ...	Size	Ratio	Date modified
3420 Drill Fold ECU	File folder					
x30-image-4	File folder					
bzImage-initramfs-x30	File	6,692 KB	No	6,705 KB	1%	8/5/2016 6:56 AM
Console.ini	Configuration settings	1 KB	No	1 KB	0%	8/5/2016 6:56 AM
install_mbr.cmd	Windows Command Script	1 KB	No	1 KB	25%	8/5/2016 6:56 AM
install_syslinux.txt	Text Document	1 KB	No	1 KB	34%	8/5/2016 6:56 AM
mongoose_io_aux_fw.hex	HEX File	16 KB	No	39 KB	60%	8/5/2016 6:57 AM
mongoose_io_fw.hex	HEX File	49 KB	No	120 KB	60%	8/5/2016 6:57 AM
mongoose_slave_fw.hex	HEX File	72 KB	No	177 KB	60%	8/5/2016 6:57 AM
mongoose-ecu_aux_upgrade.tar.gz	ACDSee Photo Manager 1...	135 KB	No	135 KB	1%	8/5/2016 6:57 AM
mongoose-ecu_upgrade.ipk	IPK File	1,956 KB	No	1,968 KB	1%	8/5/2016 6:57 AM
README.html	HTML Document	1 KB	No	2 KB	61%	8/5/2016 6:57 AM
rootfs.ext2	EXT2 File	36,199 KB	No	49,152 KB	27%	9/11/2015 6:50 AM
syslinux.cfg	CFG File	1 KB	No	1 KB	53%	8/5/2016 6:56 AM
syslinux.exe	Application	19 KB	No	28 KB	36%	8/5/2016 6:56 AM
vesamenu.c32	C32 File	76 KB	No	143 KB	48%	8/5/2016 6:56 AM
x30-image-x30.tar.gz	ACDSee Photo Manager 1...	155,724 KB	No	156,774 KB	1%	8/5/2016 6:56 AM
x30-rescue.sh	SH File	3 KB	No	10 KB	73%	8/5/2016 6:56 AM



Before upgrading firmware ensure that the ECU's are detected. If the ECU's are not detected refer to Detecting Apollo ECU's
INSERT USB WITH REQUIRED FILES TO BEGIN

Go to
settings page
by touching
wrench in
lower left of
X30 screen





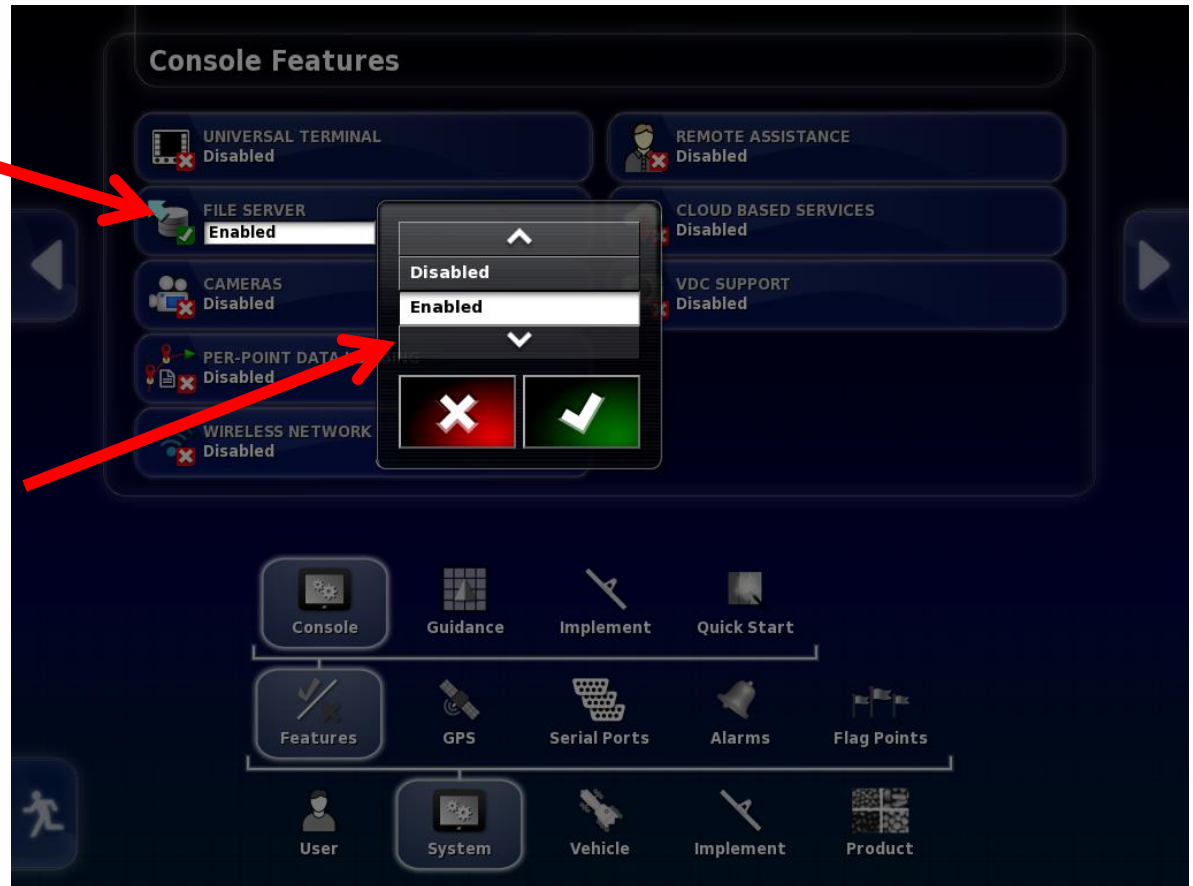
The first step is to
Ensure that the file
Server is enabled.
Go to System/
Features/ Console





Ensure File
Server
Is Enabled

If not select
Enabled and then
press check mark

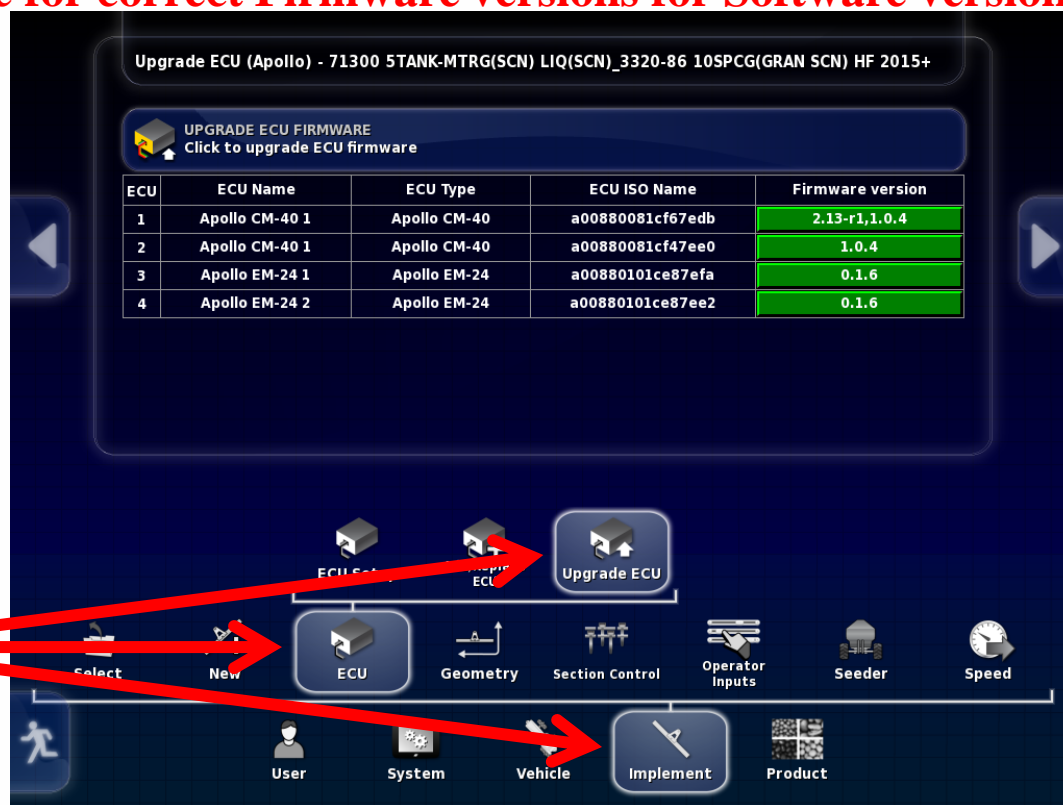




Please be aware the Firmware versions in the examples shown on screen shots may not match the versions required, refer to last page for correct Firmware versions for Software version 3.24.509

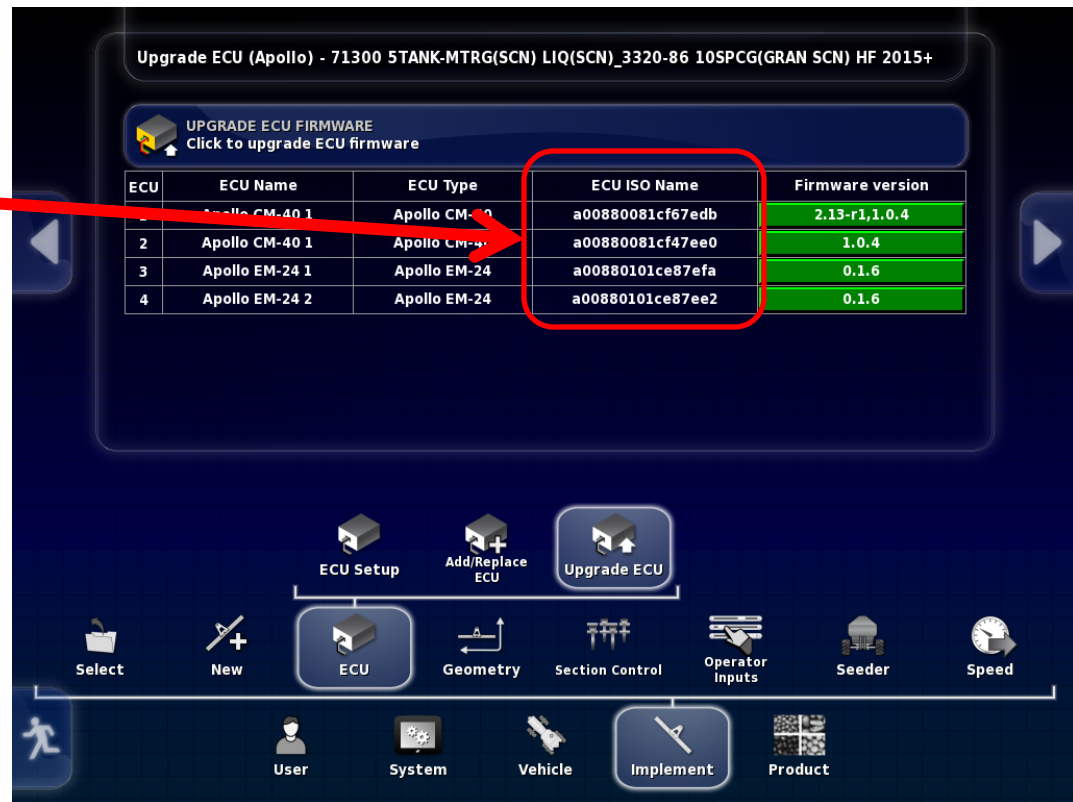
Once the file server is enabled the next step is to check whether the ECU's have been properly detected

Select
Implements/
ECU/
Upgrade ECU





If the ECU's have been detected an Id will be present under ECU ISO Name. It will also display the firmware version once ECU information is uploaded.





In the right column under Firmware version, select green tab for ECU to be upgraded.

This will vary based on options selected with tank. There will be from one to six ECU's that may need to be upgraded

Upgrade ECU (Apollo) - 7700 5TANK-MTRG(SCN)_3320-60 10SPCG(GRAN SCN)

UPGRADE ECU FIRMWARE
Click to upgrade ECU firmware

ECU	ECU Name	ECU Type	ECU ISO Name	Firmware version
1	Apollo CM-40	Apollo CM-40	a00880081ce78c5	2.11-r6
2	Apollo CM-40 1	Apollo CM-40	a00880081ce77ec5	0.0.18
3	Apollo EM-24 1	Apollo EM-24	a00880101cfd7ef9	0.0.15

ECU Setup

Add/Replace ECU

Upgrade ECU

Select

New

ECU

Geometry

Section Control

Operator Inputs

Seeder

Speed

User

System

Vehicle

Implement

Product



CM-40

After the green tab has been selected the upgrade option will come up. For Apollo CM-40 (Master) select Upgrade both
Then press check mark





CM-40

After the check mark has been pressed the green tab that had been selected will become red and display the upgrade type you selected.

Press the Upgrade ECU Firmware tab at the top of the page.

You will get warning that System will need to restart. Press Check mark.



Upgrade ECU (Apollo) - 7700 5TANK-MTRG(SCN)_3320-40 10SPCG(GRAN SCN)

UPGRADE ECU FIRMWARE
Click to upgrade ECU firmware

ECU	ECU Name	ECU Type	ECU ID Name	Firmware version
1	Apollo CM-40	Apollo CM-40	a00880081cec7ec	Upgrade both
2	Apollo CM-40 1	Apollo CM-40	Please replace ECU	N/A
3	Apollo EM-24 1	Apollo EM-24	Please replace ECU	N/A

Operation Requires Restart
This change requires the system to be restarted. Click OK to continue, or Cancel to undo the change.

ECU Setup Add/Replace ECU Upgrade ECU

Select New ECU Geometry Section Control Operator Inputs Seeder Speed

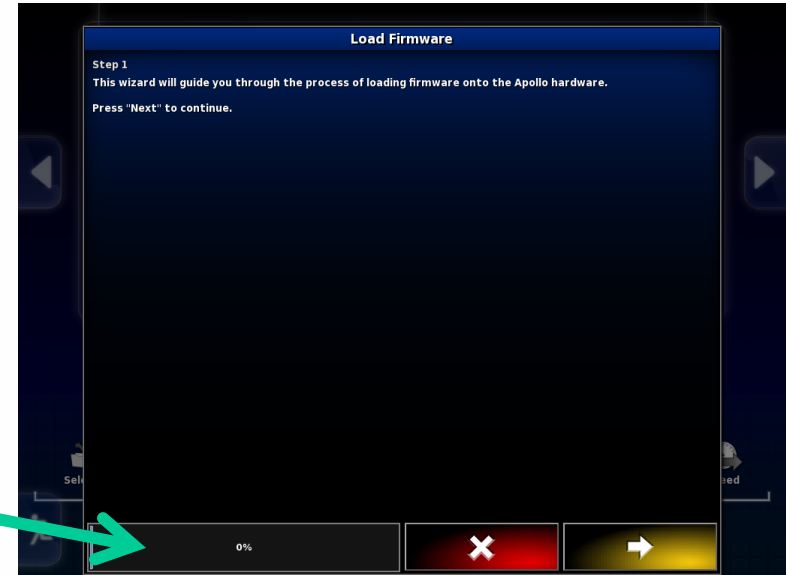
User System Vehicle Implement Product



CM-40

You will be guided through the firmware upgrade with the help of a wizard.
Read instructions and press right arrow when it turns yellow.

Step 1 starts the upgrade procedure
You will be able to track progress here.



Step 2

To start the upgrade insert the thumb drive into the left side of the X30 when right arrow turns yellow it is ready right arrow can be pressed.





CM-40

Step 3

A list of files on the thumb drive should show up listed on screen

press the right arrow button to continue.





CM-40

Step 4

The upgrade will now
begin

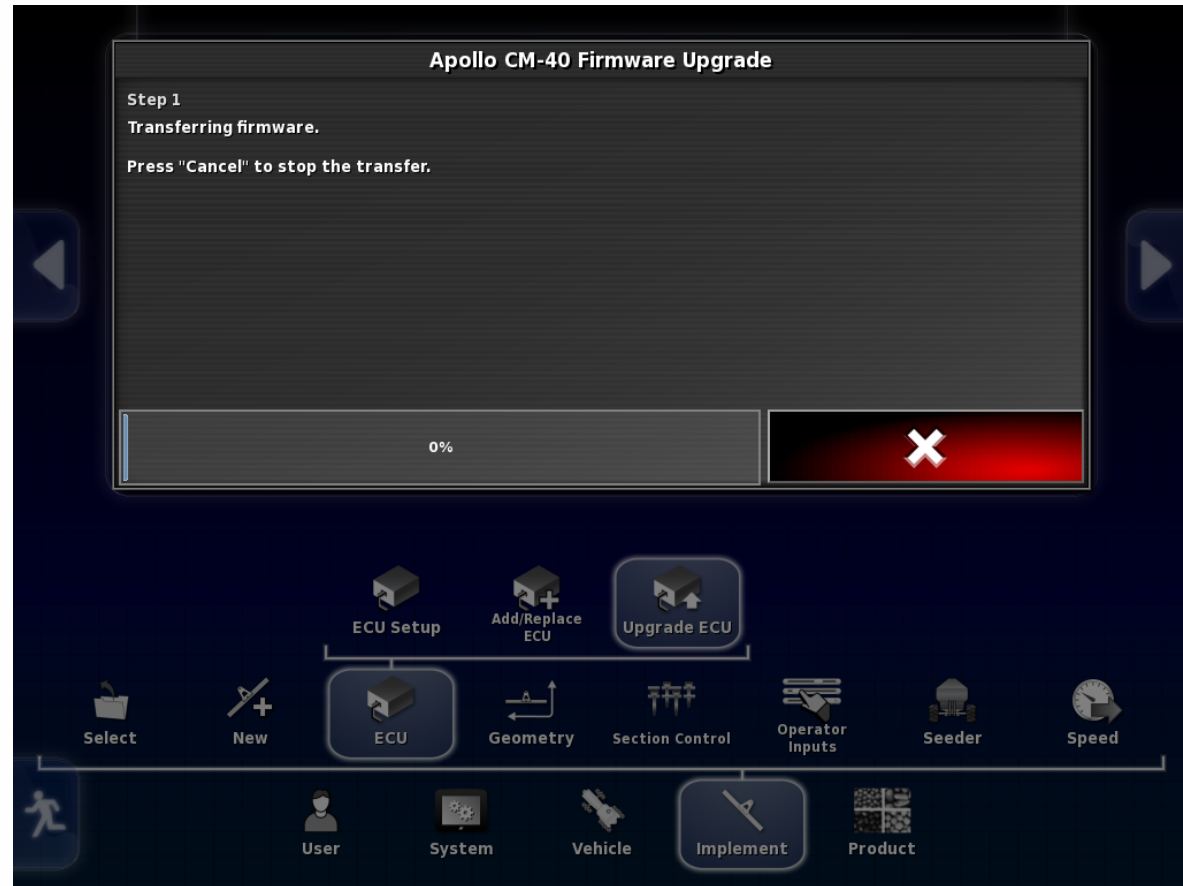
Press Check mark
To start Upgrade





CM-40

Firmware transfer will begin. (This may take up to twenty minutes to complete.). This is upgrading the main part of the ECU





CM-40

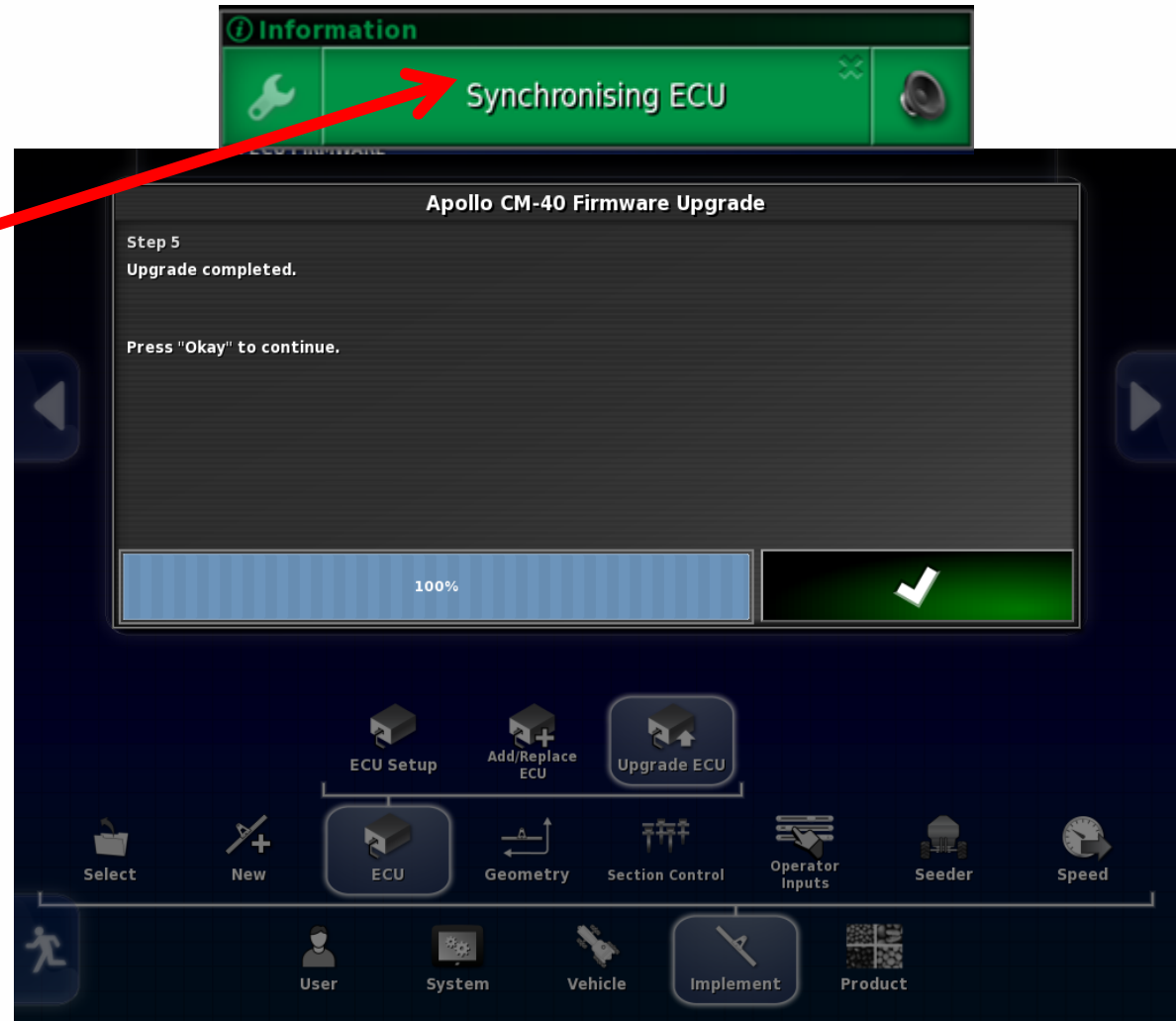
Once the Upgrade is complete you will see this screen.

Wait until the Green Synchronizing bar (this will appear at the top center of the screen) goes away before pressing check mark.



The monitor will now shut down and restart.

Note: if you selected upgraded both the auxiliary firmware will now update. It will be an hour glass on the screen but only takes a short time and then it will shut down.





CM-40

If the firmware version does not upload after the monitor restarts, (this can take a few minutes).

It will be necessary to power the ECU down by shutting tractor off or unplugging the ISO plug at the back of the tractor. (See next page)

Upgrade ECU (Apollo) - 7700 5TANK-MTRG(SCN)_3320-40 10SPCG(GRAN SCN)

 UPGRADE ECU FIRMWARE
Click to upgrade ECU firmware

ECU	ECU Name	ECU Type	ECU ISO Name	Firmware version
1	Apollo CM-40	Apollo CM-40	a00880081cec7eca	N/A
2	Apollo CM-40 1	Apollo CM-40	Please replace ECU	N/A
3	Apollo EM-24 1	Apollo EM-24	Please replace ECU	N/A

ECU Setup Add/Replace ECU Upgrade ECU

Select New ECU Geometry Section Control Operator Inputs Seeder Speed

User System Vehicle Implement Product



CM-40

If monitor fails to upload information from ECU unplug This ISO plug at the back of the tractor to cut power to the ECU.

For units hooked to keyed power the tractor can be shut off to accomplish this as well.





CM-40

Monitor will show that it is Synchronizing and Configuring ECU once this is complete both the Main and Aux. Firmware should be displayed and match what was uploaded. If one or both are not correct this process must be repeated for the one(s) not matching the desired firmware.

Information

Upgrade I

Synchronising ECU

UPGRADE ECU FIRMWARE
Click to upgrade ECU firmware

ECU	ECU Name	ECU Type	ECU ISO Name	Firmware version
1	Apollo CM-40	Apollo CM-40	a00880081cec7eca	2.11-r6,N/A
2	Apollo CM-40 1	Apollo CM-40	Please replace ECU	N/A
3	Apollo EM-24 1	Apollo EM-24	Please replace ECU	N/A

Main Aux

ECU Setup Add/Replace ECU Upgrade ECU

Select New ECU Geometry Section Control Operator Inputs Seeder Speed

User System Vehicle Implement Product



CM-40

If both Main and Aux. firmware are correct the upgrade for the Apollo CM-40 (Master) is complete.

If you only have one ECU on the tank, (four tank metering or less) Upgrade is complete.

If your tank has 5 tank metering, sectional control, or blockage follow procedure following for ECU's present.

Main Aux

ECU	ECU Name	ECU Type	ECU ISO Name	Firmware version
1	Apollo CM-40	Apollo CM-40	a00880081cec7eca	2.11-r6,0.0.18
2	Apollo CM-40 1	Apollo CM-40	Please replace ECU	N/A
3	Apollo EM-24 1	Apollo EM-24	Please replace ECU	N/A

The interface also features a bottom menu with icons for Select, New, ECU, Geometry, Section Control, Operator Inputs, Seeder, Speed, User, System, Vehicle, Implement, and Product. The 'Upgrade ECU' button is highlighted in the top menu.



EXTRA CM-40

If tank has more that one CM-40 (tank 5 &/or Packmaster follow this upgrade procedure.

Go to Implement/
ECU/
Upgrade ECU
Press tab for CM-40 1
(slave)
select upgrade, press
Check mark.





EXTRA CM-40

Tab will turn red
Operation Requires Restart
warning will come up,
press the check mark

Upgrade ECU (Apollo) - 7700 5TANK-MTRG(SCN)_3320-60 10SPCG(GRAN SCN)

UPGRADE ECU FIRMWARE
Click to upgrade ECU firmware

ECU	ECU Name	ECU Type	ECU ISO Name	Firmware version
1	Apollo CM-40	Apollo CM-40	a00880081cec7eca	N/A
2	Apollo CM-40 1	Apollo CM-40	a00880081ce77ec5	Upgrade
3	Apollo EM-24 1	Apollo EM-24	a00880101cfd7ef9	N/A

Operation Requires Restart
This change requires the system to be restarted. Click OK to continue, or Cancel to undo the change.

ECU Setup Add/Replace ECU Upgrade ECU

Select New ECU Geometry Section Control Operator Inputs Seeder Speed

User System Vehicle Implement Product



EXTRA CM-40

Follow steps of wizard like the procedure for the master.



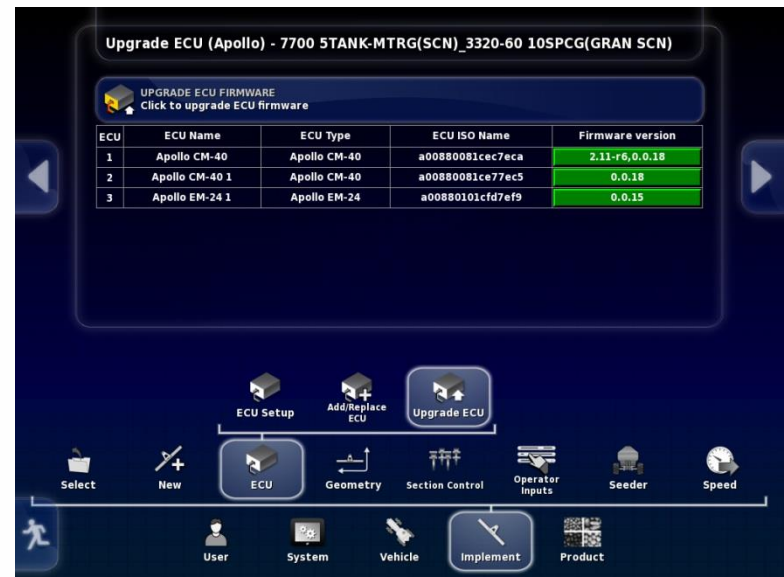


EXTRA CM-40

When firmware has completely loaded
Press the green check mark.

The monitor will restart.

The ECU should synchronize and the
firmware version is only visible for the Aux
firmware. You may have to shut
the tractor off or unplug the ISO Plug at the
back of the tractor, and plug it back in if it
does not upload the info from the ECU.





EXTRA CM-40

In order to Upgrade the Main Firmware you will have to create an “Upgrade” profile. (Some tanks may already have this profile) Do this after you have Upgraded all ECU’s on machine. (Once Upgrade is complete you must then return to original profile)

Go to Implement/
New/
Factory

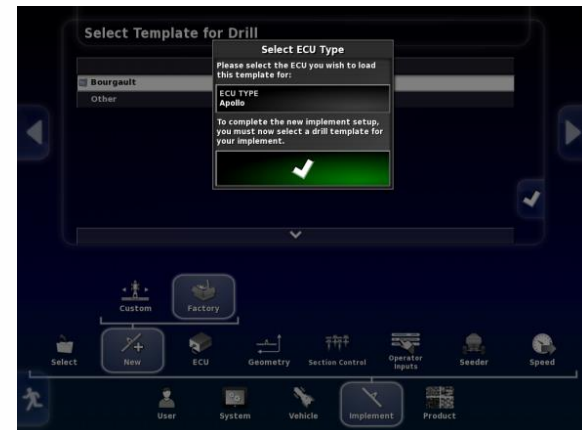
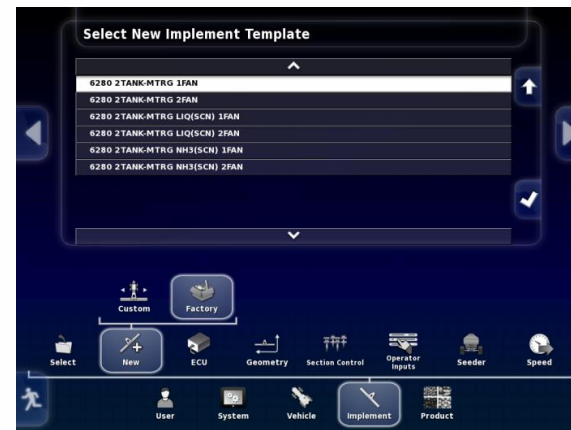
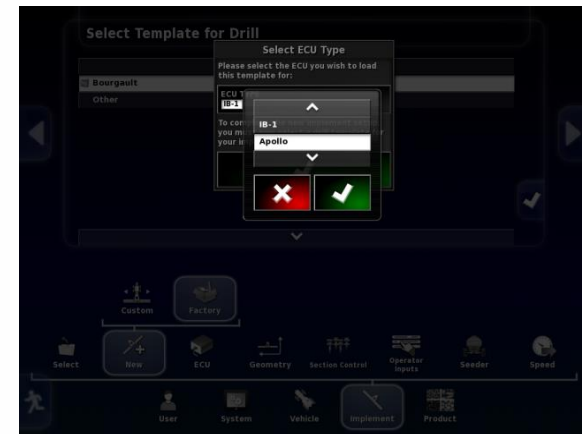
Select a new implement
with only one ECU select

The first item in each list

6000/
6280/

6280 2 TANK MTRG 1FAN

Select Apollo for ECU type





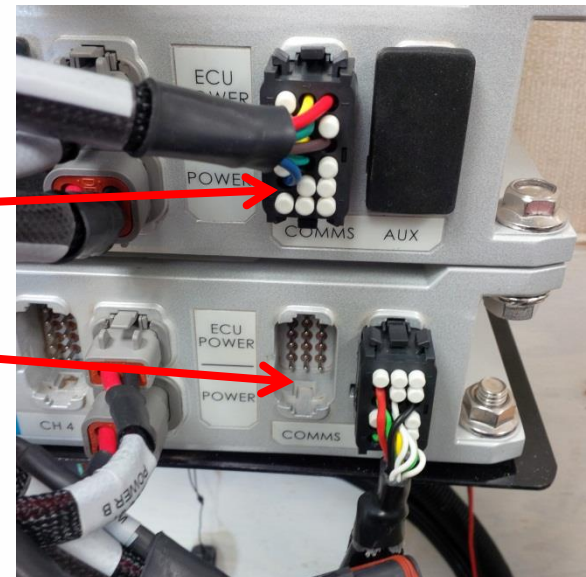
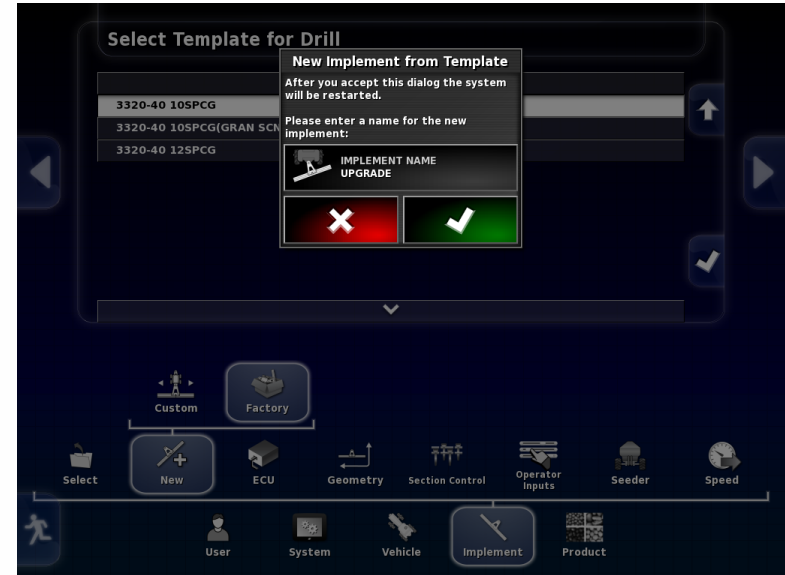
EXTRA CM-40

Name new profile Extra CM-40
(UPGRADE)

While the system is re-starting
unplug all of the COMMS
connectors from all ECU's except
the one you want to Upgrade,
CM-40 (Slave)(the slave only has 1 or 2
Channels used if you have a slave the
Master will have all 4 Channels used)

COMMS Port being Detected

COMMS Unplugged






EXTRA CM-40

Go to Implement/
ECU/
Add/Replace ECU

Add/Replace ECU (Apollo) - UPGRADE

 **ADD NEW ECUS**
Click to add new ECUs

ECU	ECU Name	ECU Type	ECU ISO Name	Firmware version	Status
1	Apollo CM-40	Apollo CM-40	Please replace ECU	N/A	Aux CPU Enabled

Navigation Menu:

- Select
- New
- ECU** (Sub-menu: ECU Setup, **Add/Replace ECU**, Upgrade ECU)
- Geometry
- Operator Inputs
- Seeder
- Speed
- User
- System
- Vehicle
- Implement**
- Product

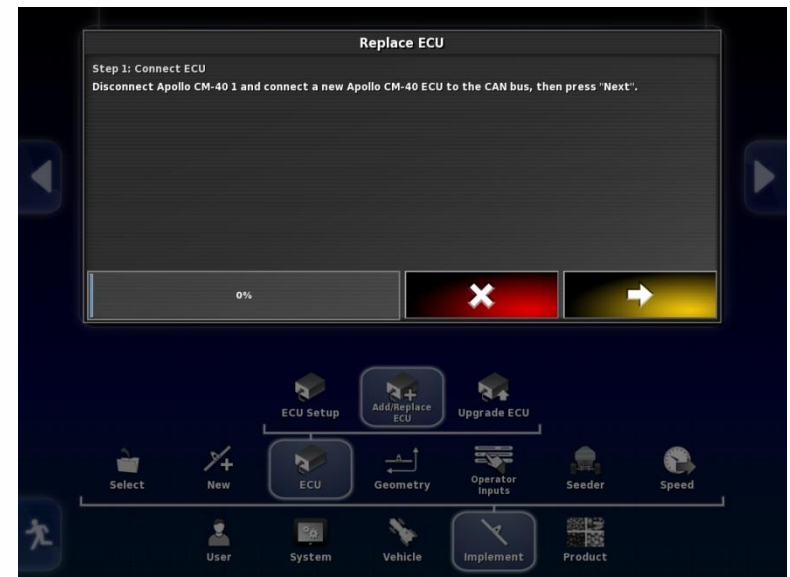


EXTRA CM-40

Select Replace CM-40
Press check mark.



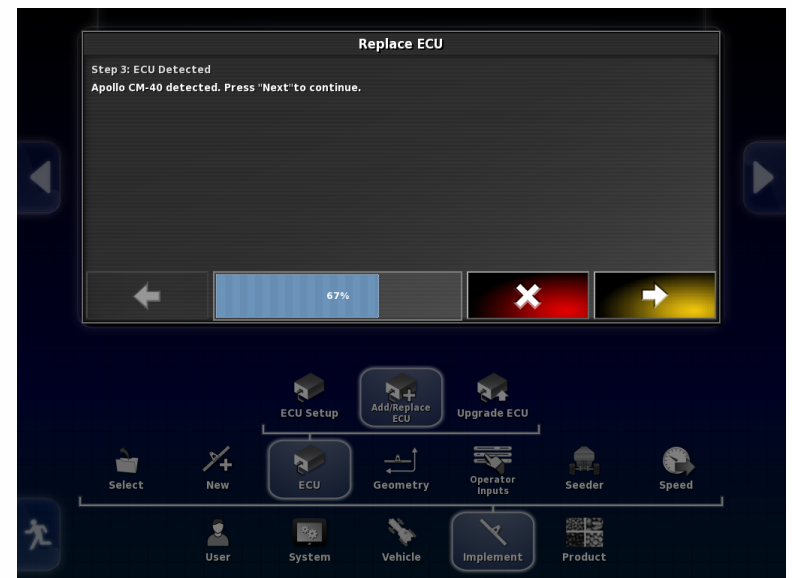
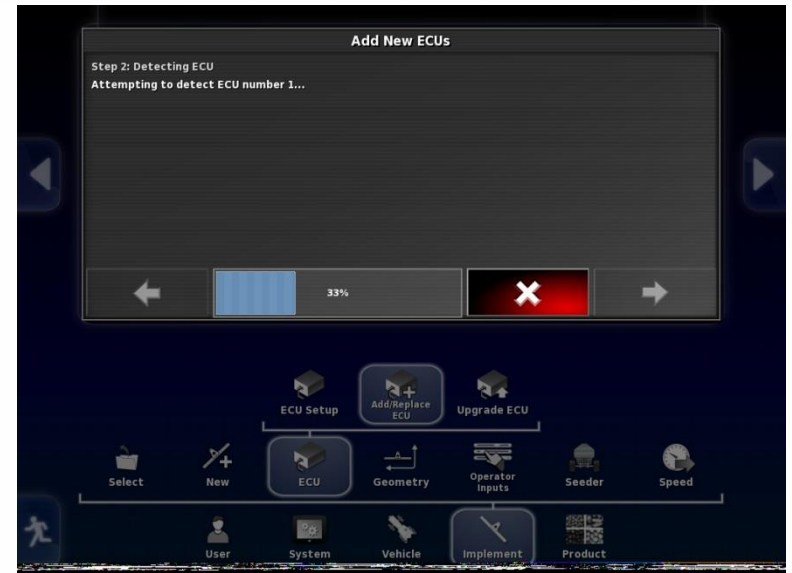
Follow directions of wizard
to replace ECU.





EXTRA CM-40

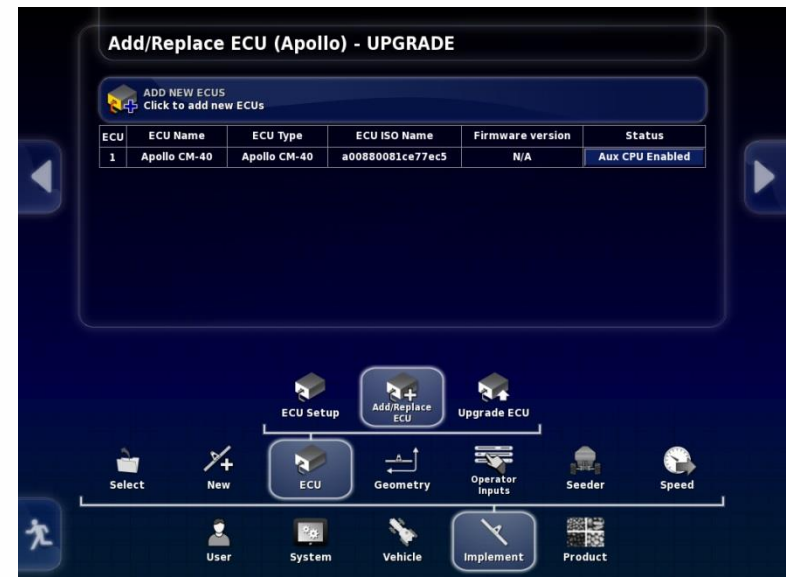
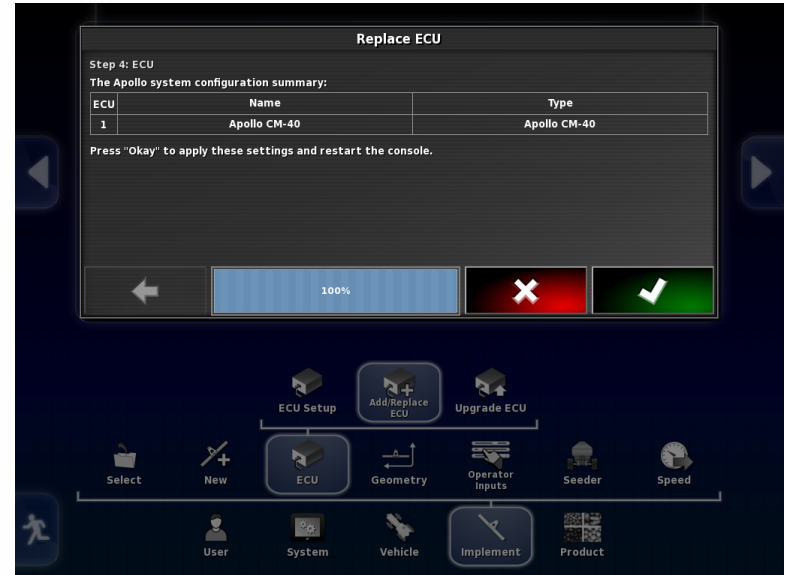
Press the Arrow when it turns yellow to advance to next step.





EXTRA CM-40

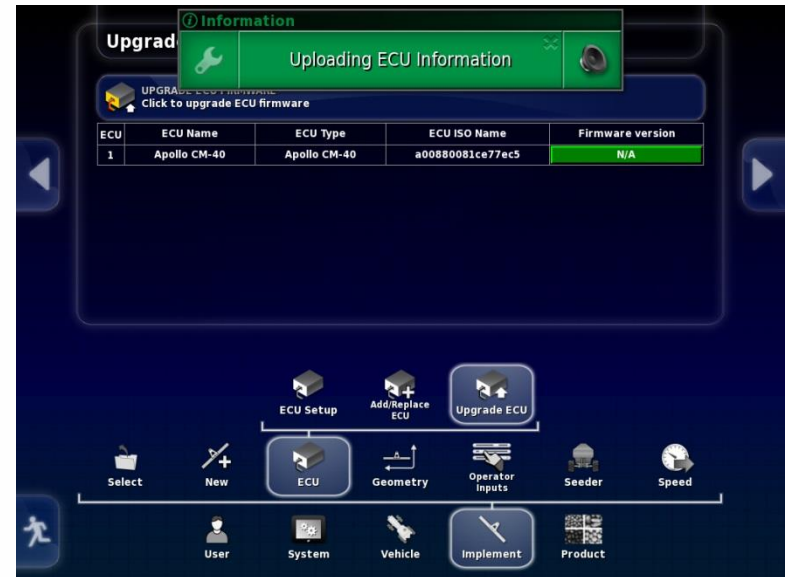
Once complete press green tab with
Check mark.
Monitor will re-start.
If ECU is not detected unplug ISO plug
at back of tractor



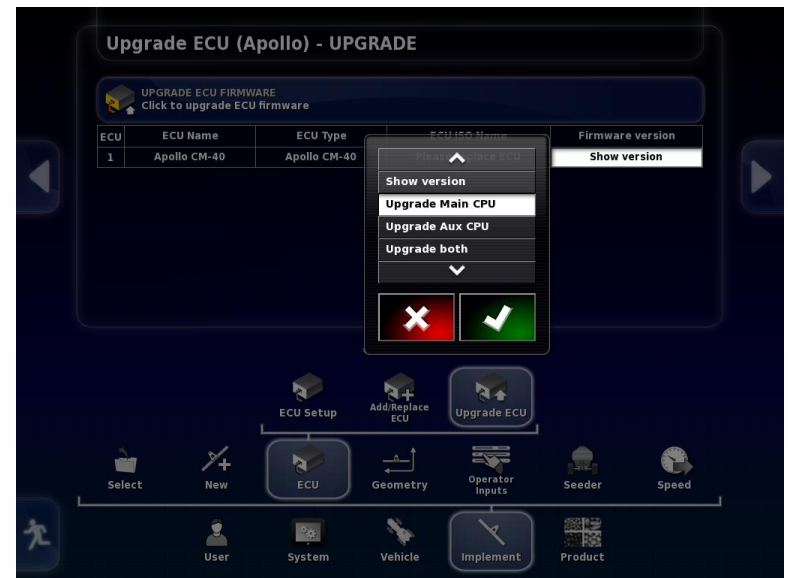


EXTRA CM-40

If ECU is selected should get a green tab indicating the ECU information is being uploaded.



Once this is complete you can now Upgrade the firmware, select Update Main CPU, press check mark.



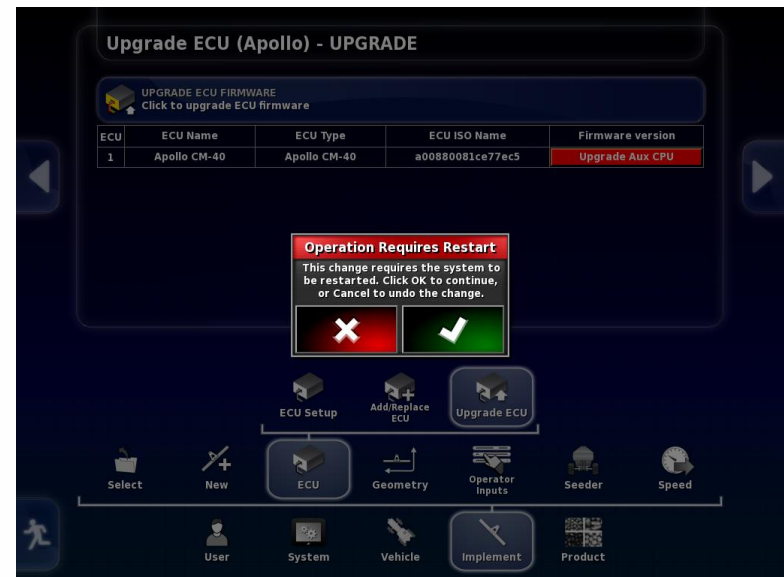


EXTRA CM-40

The right tab will turn red.
Press the Upgrade ECU Firmware tab
at the top to begin Upgrade.



Will get warning that a restart must occur
if you proceed. Press the check mark.

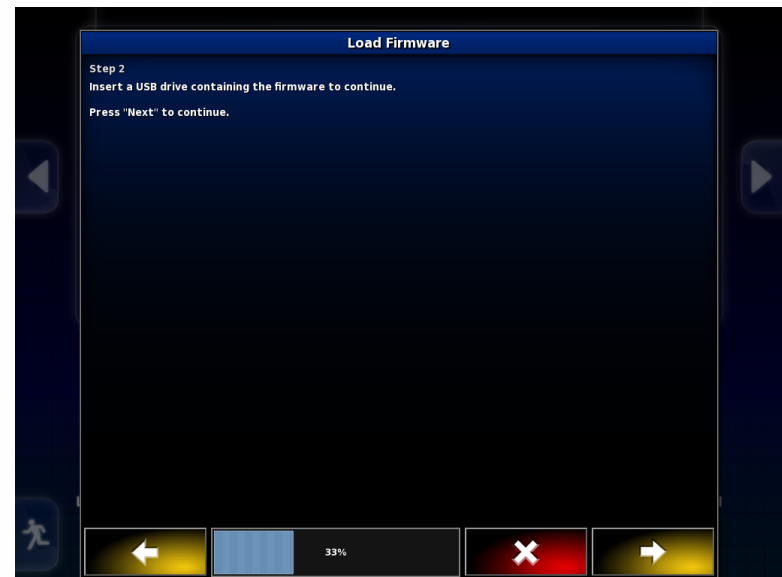




EXTRA CM-40

Wizard will guide you through the
Firmware update.

Insert Thumb drive with Upgrade
into USB port on side of X30





EXTRA CM-40

Upgrade files should be visible.



Once complete press check mark to initiate restart.



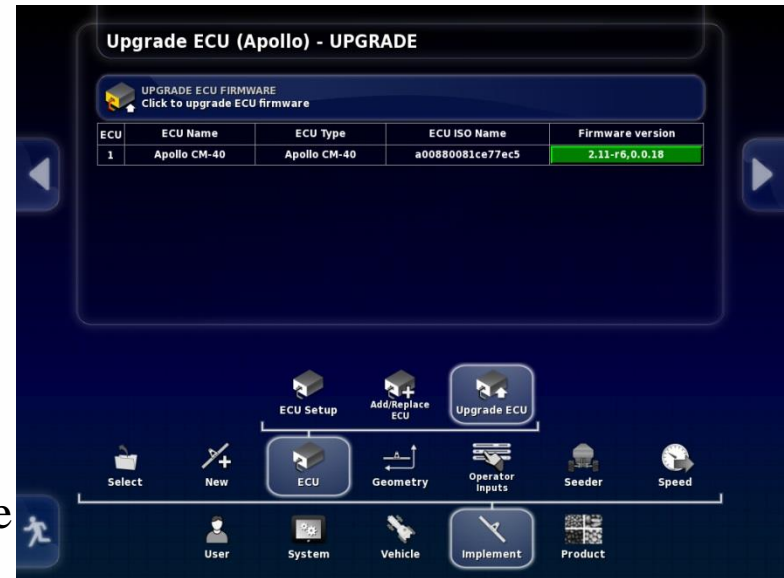


EXTRA CM-40

Once firmware is detected check both Main and Aux firmware to make sure they are the correct versions.

You will now have to switch profiles back to the original profile of your actual machine.

Re-plug all of the COMMS connectors into the proper ECU's.



You may have to shut down/unplug ISO connector at the back of the tractor to get ECU information to upload.

This completes the Upgrade for the Main portion of the CM-40 1 (slave Master ECU, 5 tank and 6 tank machines)

Note: Downforce CM-40 would follow the same procedure if it is present and needs to be upgraded to new firmware,



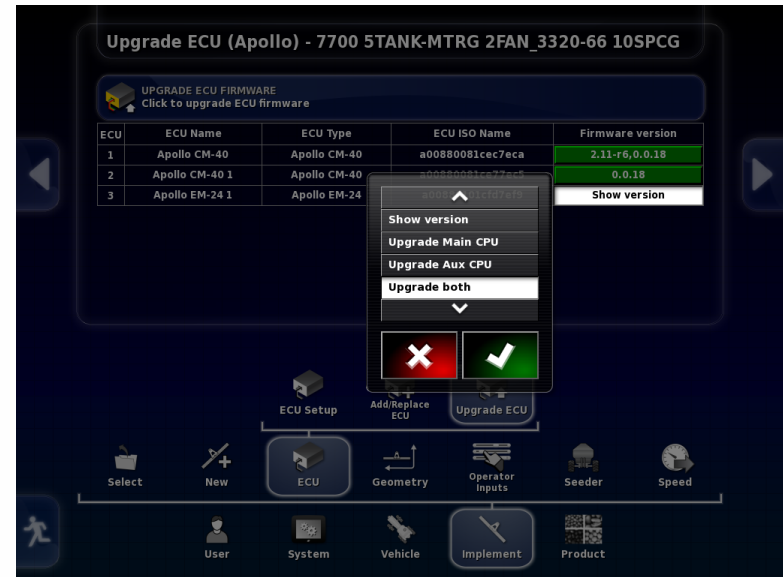
EM-24

If tank has either sectional control or blockage or both firmware for Apollo EM-24 must also be completed.

This must be done for each EM-24 on machine. There will be one EM-24 for sectional control and one EM-24 for blockage. (blockage EM-24 mounted on drill, for a leading tank the sectional EM-24 is also mounted on the drill)

Go to Implement/
ECU/
Upgrade ECU

Press tab to right of EM-24 to be Upgraded, select Upgrade both, press the check mark





EM-24

Tab selected will turn red.

Press the tab labelled
Upgrade ECU Firmware
to initiate Upgrade

Upgrade ECU (Apollo) - 7700 5TANK-MTRG 2FAN_3320-66 10SPCG

 **UPGRADE ECU FIRMWARE**
Click to upgrade ECU firmware

ECU	ECU Name	ECU Type	ECU ISO Name	Firmware version
1	Apollo CM-40	Apollo CM-40	a00880081cec7eca	2.11-r6,0.0.18
2	Apollo CM-40 1	Apollo CM-40	a00880081ce77ec5	0.0.18
3	Apollo EM-24 1	Apollo EM-24	a00880101cfd7ef9	Upgrade both

Navigation Menu:

- ECU Setup
- Add/Replace ECU
- Upgrade ECU** (Selected)
- Select
- New
- ECU
- Geometry
- Operator Inputs
- Seeder
- Speed
- User
- System
- Vehicle
- Implement
- Product



EM-24

Should get warning
that a restart is required.

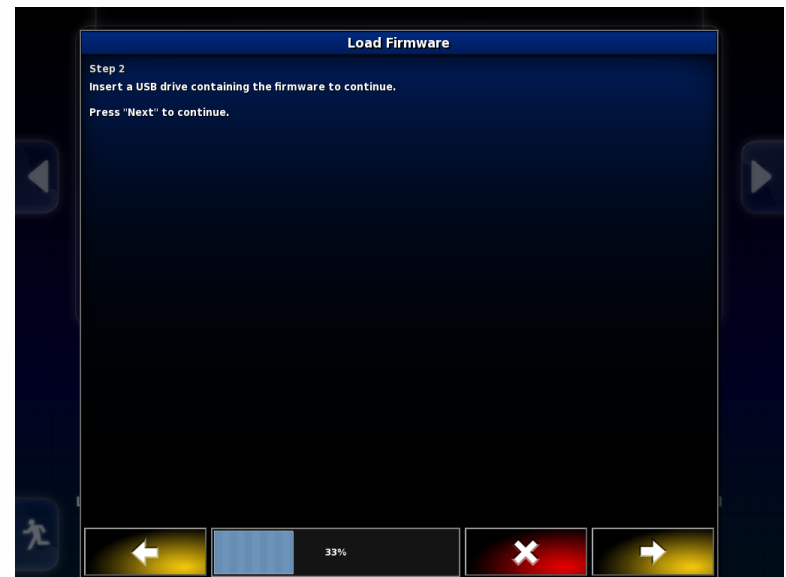
Press the check mark.





EM-24

Follow steps given by wizard.





EM-24

Once firmware is loaded press the check mark at bottom right of X30 screen.





EM-24

Monitor will restart

If monitor does not detect ECU power down by shutting tractor off or unplugging the ISO plug at the back of the Tractor.

Once synchronized the firmware should be visible, Check that it is the correct version.

If only one EM-24 you are finished.

If you have a second EM-24 repeat procedure for second EM-24. (Second EM-24 will be named Apollo EM-24 2)
Upgrade complete





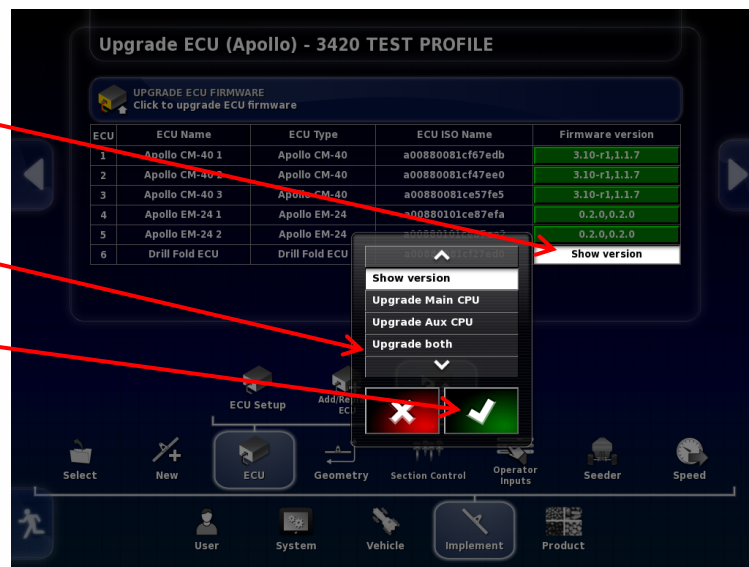
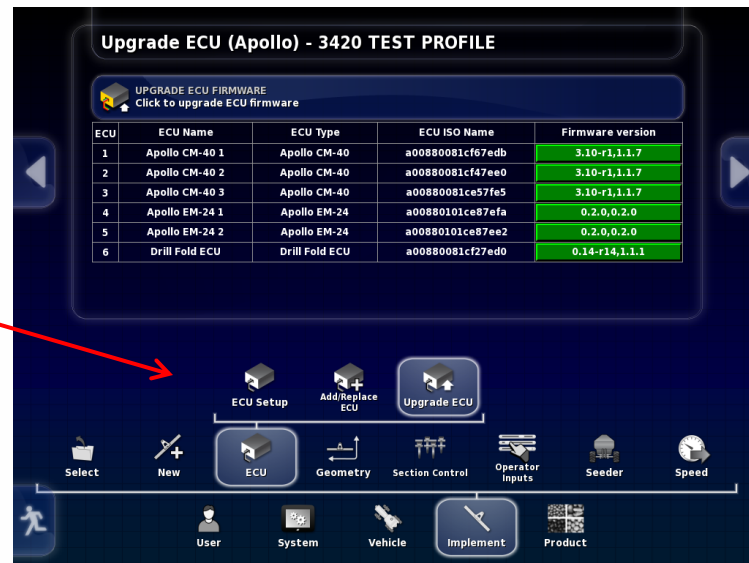
Drill Fold ECU – 3420 only

3420 Drill Fold ECU Upgrade
Go to ECU Upgrade tab

Select Firmware version tab for
Drill Fold ECU,

select upgrade both,

Select check mark





Drill Fold ECU – 3420 only

Touch the Upgrade ECU Firmware tab

Warning screen will appear
Make sure no one is near Machine, when safe press the check mark

Upgrade ECU (Apollo) - 3420 TEST PROFILE

UPGRADE ECU FIRMWARE
Click to upgrade ECU firmware

ECU	ECU Name	ECU Type	ECU ISO Name	Firmware version
1	Apollo CM-40 1	Apollo CM-40	a00880081cf67edb	3.10-r1,1.1.7
2	Apollo CM-40 2	Apollo CM-40	a00880081cf47ee0	3.10-r1,1.1.7
3	Apollo CM-40 3			3.10-r1,1.1.7
4	Apollo EM-24 1			0.2.0,0.2.0
5	Apollo EM-24 2			0.2.0,0.2.0
6	Drill Fold ECU			Upgrade both

Operation Requires Restart
WARNING: certain functions may cycle or change state unexpectedly as the console powers down or restarts. Please ensure all people are clear of the machine before continuing.
This change requires the console to be restarted. Click OK to continue, or Cancel to undo the change.

ECU Setup
Add/Replace ECU Upgrade ECU

Select **New** **ECU** **Geometry** **Section Control** **Operator Inputs** **Seeder** **Speed**

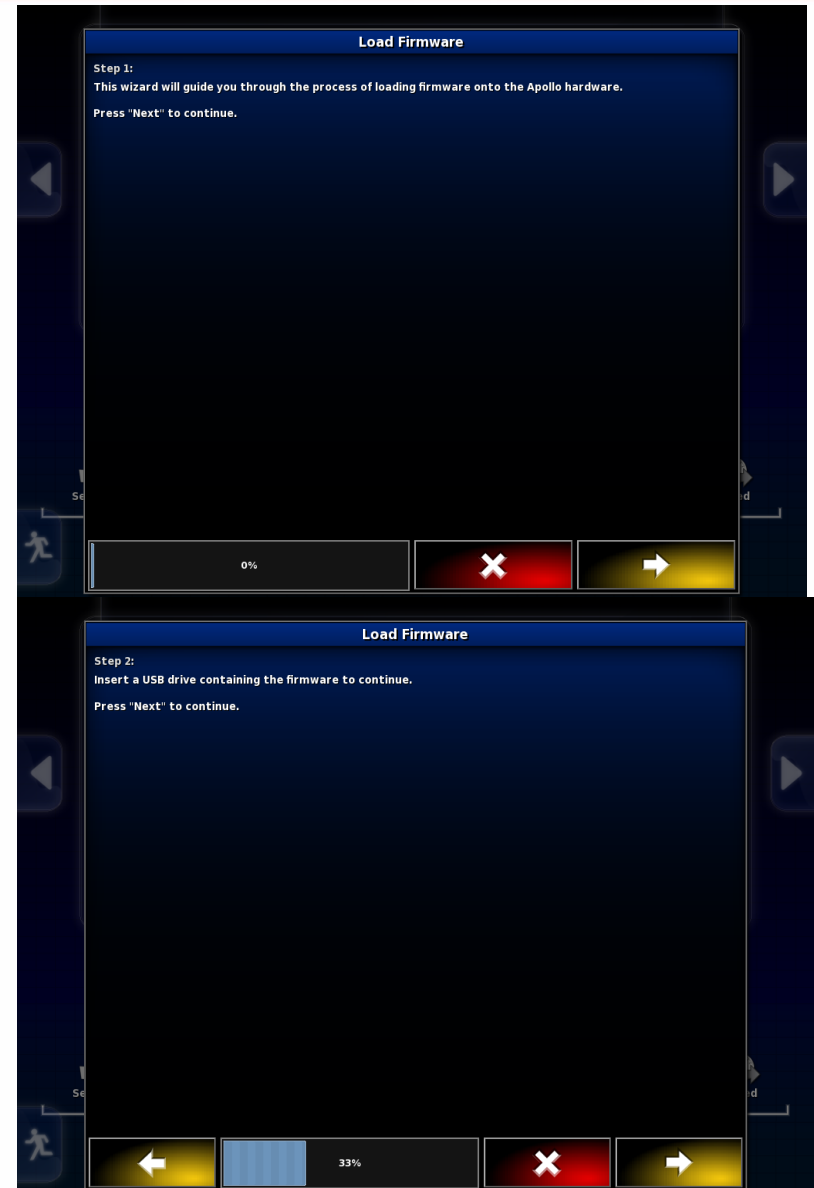
User **System** **Vehicle** **Implement** **Product**



Drill Fold ECU – 3420 only

Wizard will guide you through the Upgrade

Insert USB with firmware into monitor



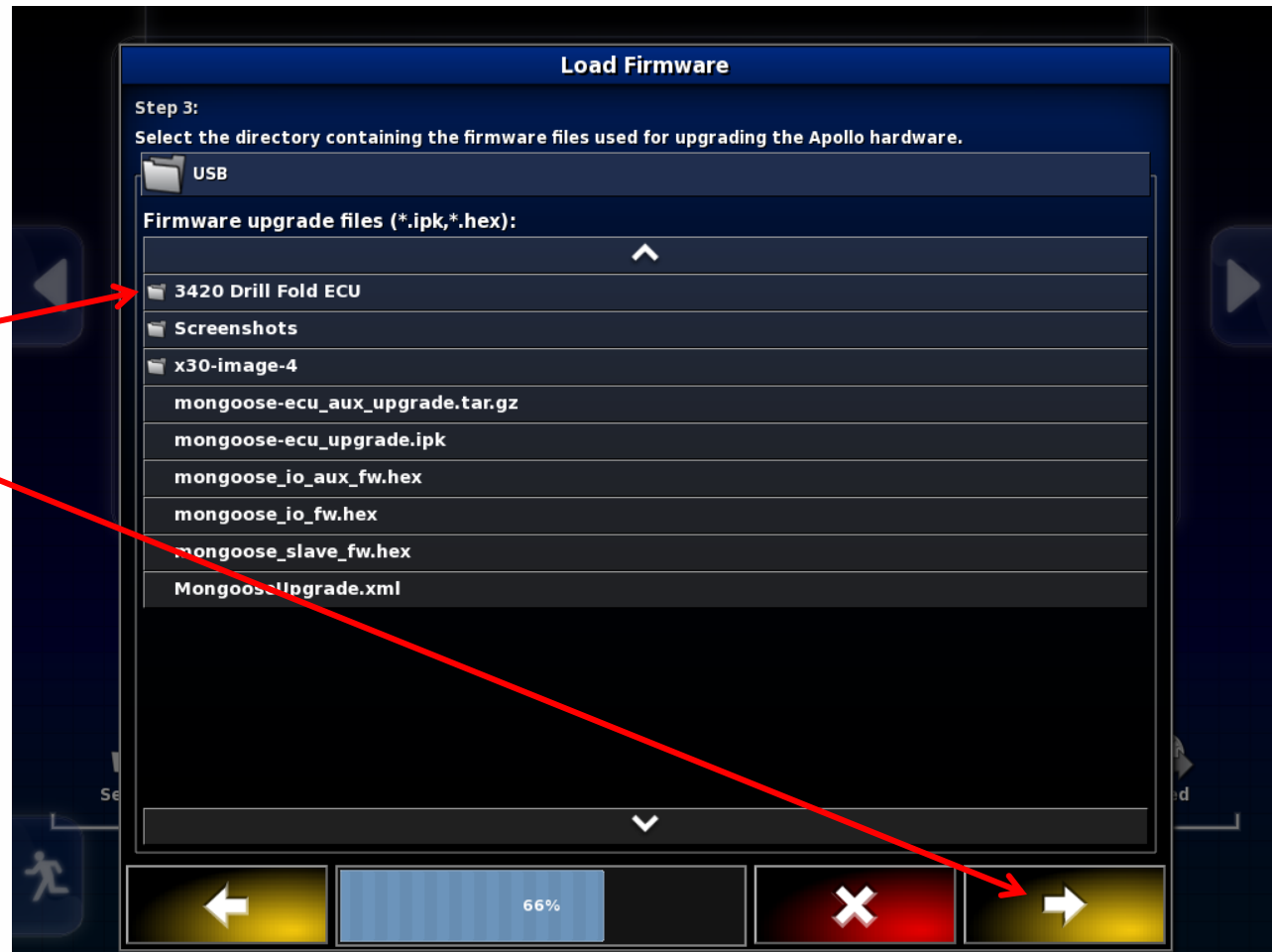


Drill Fold ECU – 3420 only

Drill fold firmware is
Located in the 3420 Drill
Fold ECU folder.

Select this folder

Press the right arrow tab



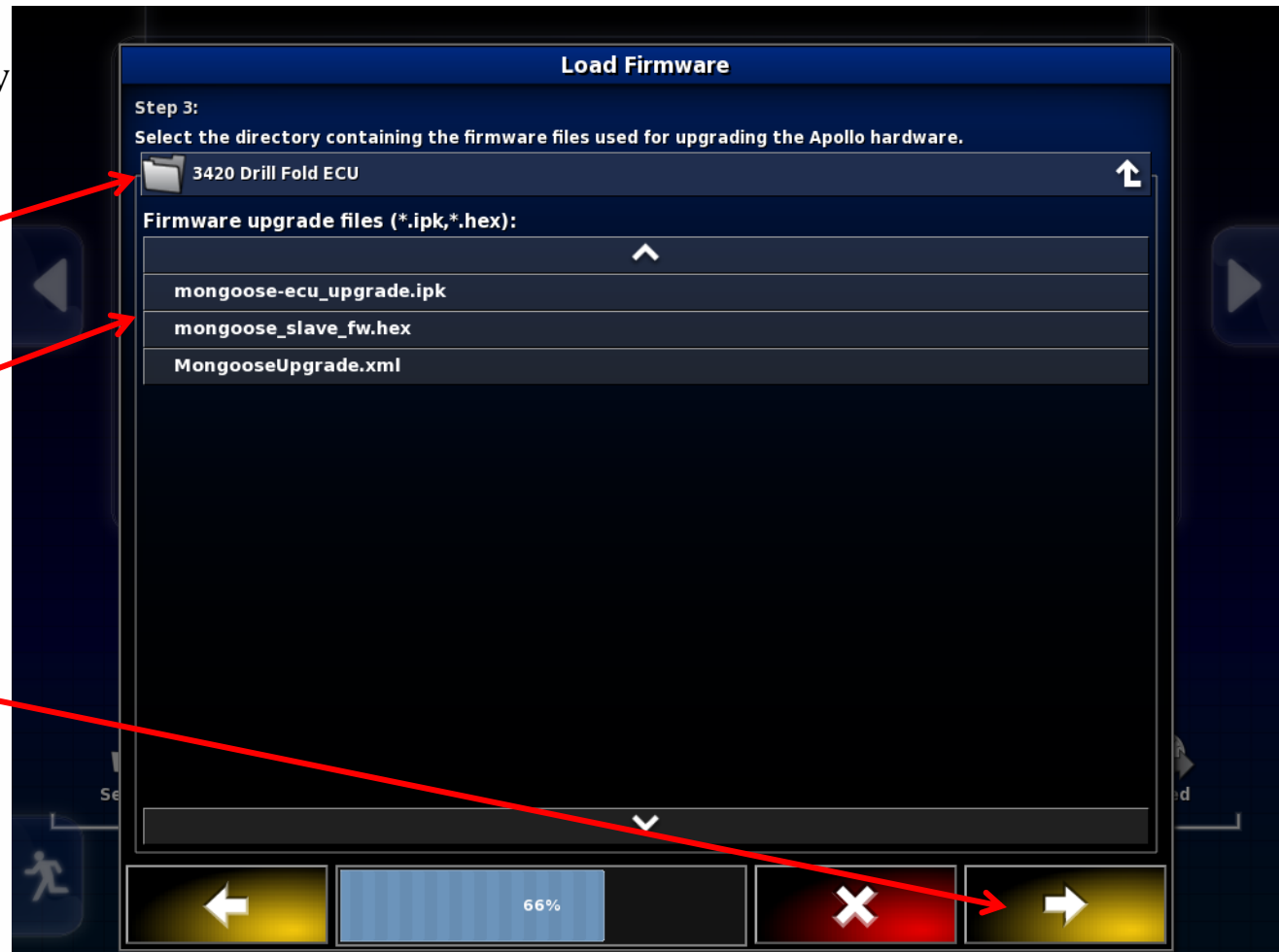


Drill Fold ECU – 3420 only

The screen should now
Look like this with
The 3420 Drill Fold
ECU folder open .

There should be three
Upgrade files.

Press the right arrow
Tab.

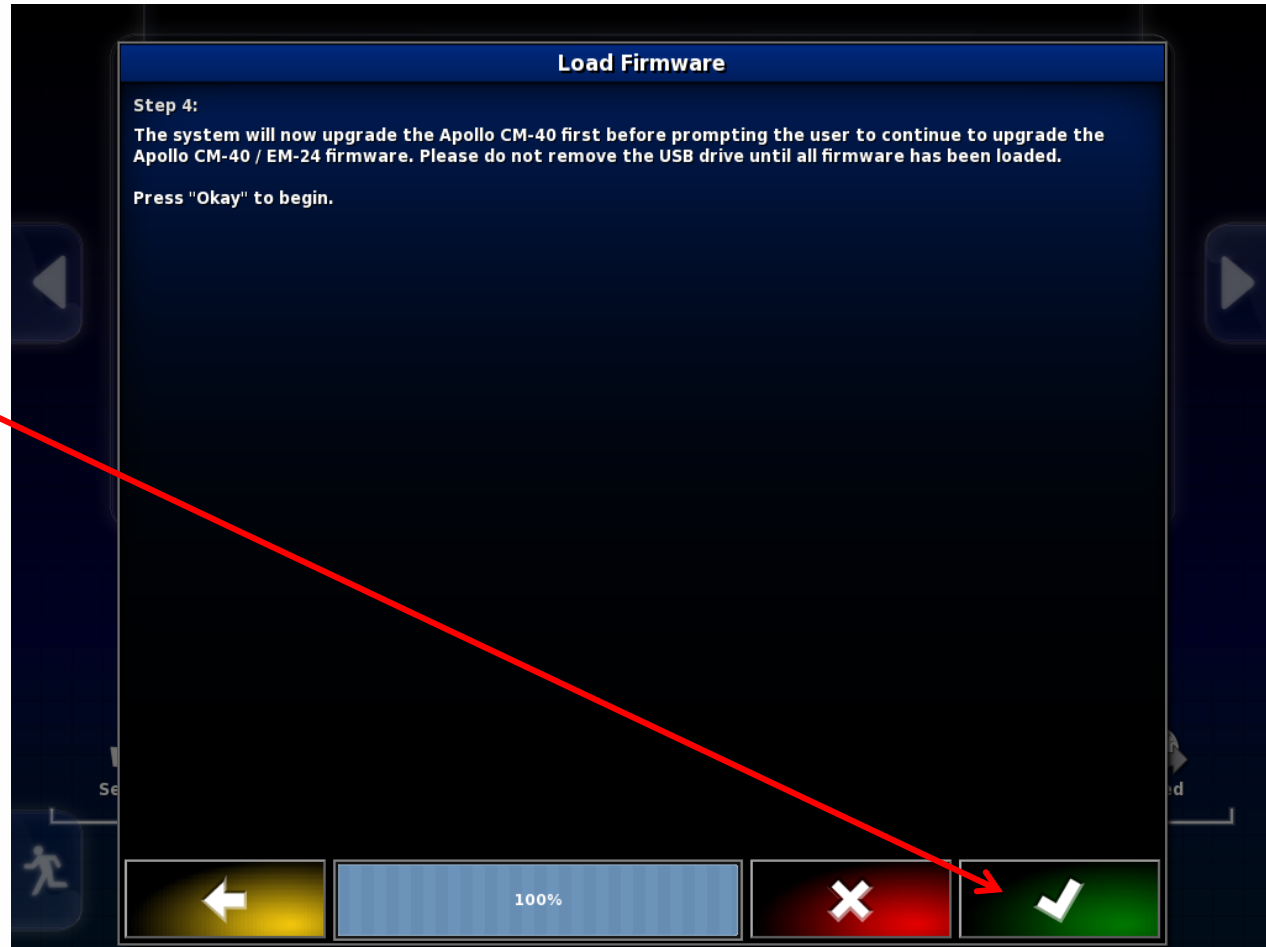




Drill Fold ECU – 3420 only

System is ready to Upgrade
The CM-40 with Drill fold
Software.

Press check mark.

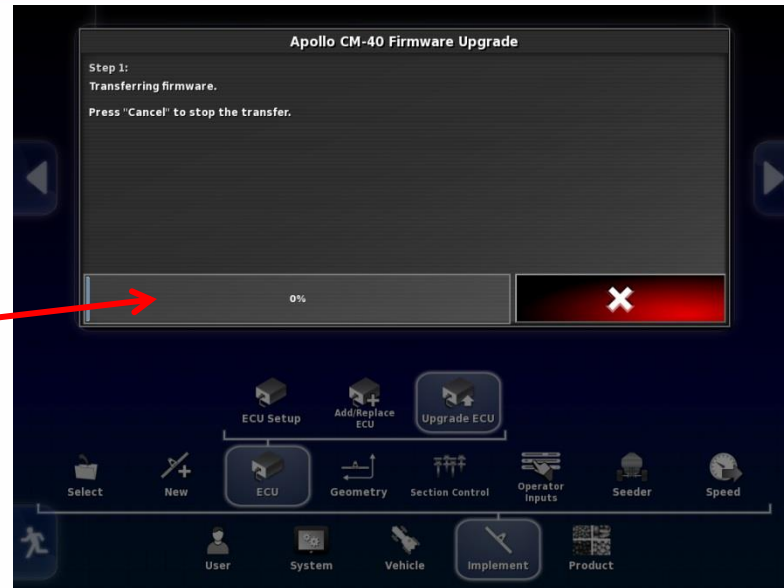




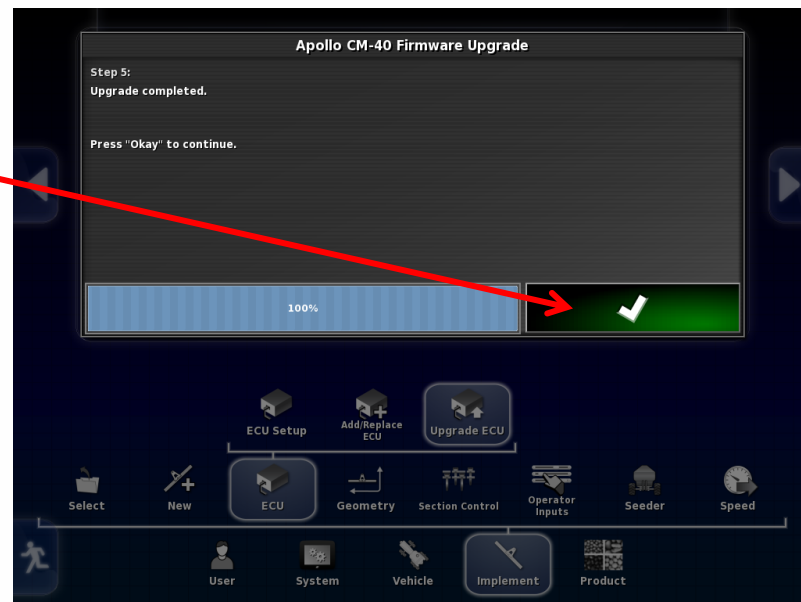
Drill Fold ECU – 3420 only

Firmware will now be upgraded

Bar turns blue showing progress



When complete press check mark
To proceed.





Drill Fold ECU – 3420 only

Monitor will restart,
Communication will have
To be re-established with
ECU's
ECU's may need power
supply removed before they
will synchronize.
This can be done by shutting
tractor off or unplugging
ISO plug at rear of tractor

Warning!
No ECU Communication - Drill Fold ECU

UPGRADE ECU
Click to upgrade ECU firmware

ECU	ECU Name	ECU Type	ECU ISO Name	Firmware version
1	Apollo CM-40 1	Apollo CM-40	a00880081cf67edb	N/A
2	Apollo CM-40 2	Apollo CM-40	a00880081cf47ee0	N/A
3	Apollo CM-40 3	Apollo CM-40	a00880081ce57fe5	N/A
4	Apollo EM-24 1	Apollo EM-24	a00880101ce87efa	N/A
5	Apollo EM-24 2	Apollo EM-24	a00880101ce87ee2	N/A
6	Drill Fold ECU	Drill Fold ECU	----	N/A

ECU Setup Add/Replace ECU Upgrade ECU

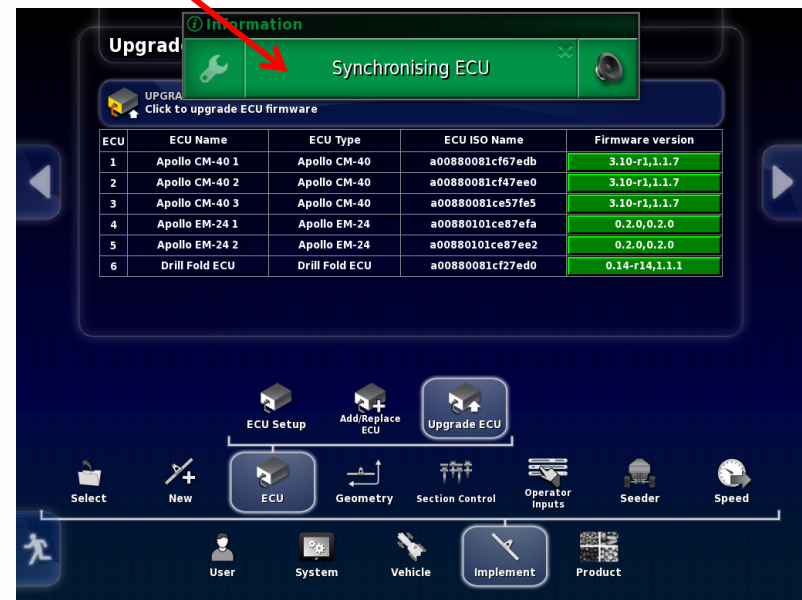
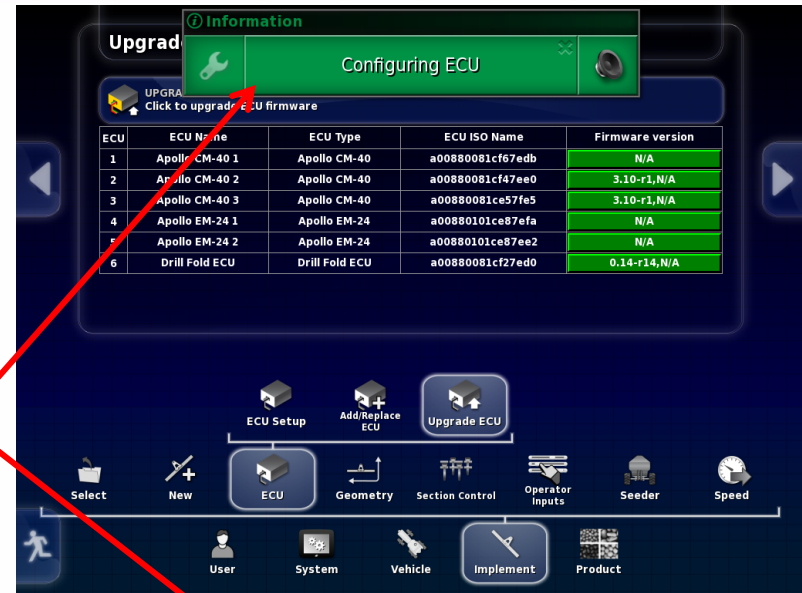
Select New ECU Geometry Section Control Operator Inputs Seeder Speed

User System Vehicle Implement Product



Drill Fold ECU – 3420 only

Allow X30 and ECU's to configure and synchronize before doing anything green status bar must not be touched or the upgrade may have to be redone.






Drill Fold ECU – 3420 only

Upgrade is complete
You can now touch
Any of the tabs.

Note: a CM-40 is turned
Drill Fold ECU by
changing the firmware,
the Drill Fold ECU can
be changed back to a
CM-40 by putting the
CM-40 firmware back
onto it.

Upgrade ECU (Apollo) - 3420 TEST PROFILE

 **UPGRADE ECU FIRMWARE**
Click to upgrade ECU firmware

ECU	ECU Name	ECU Type	ECU ISO Name	Firmware version
1	Apollo CM-40 1	Apollo CM-40	a00880081cf67edb	3.10-r1,1.1.7
2	Apollo CM-40 2	Apollo CM-40	a00880081cf47ee0	3.10-r1,1.1.7
3	Apollo CM-40 3	Apollo CM-40	a00880081ce57fe5	3.10-r1,1.1.7
4	Apollo EM-24 1	Apollo EM-24	a00880101ce87efa	0.2.0,0.2.0
5	Apollo EM-24 2	Apollo EM-24	a00880101ce87ee2	0.2.0,0.2.0
6	Drill Fold ECU	Drill Fold ECU	a00880081cf27ed0	0.14-r14,1.1.1

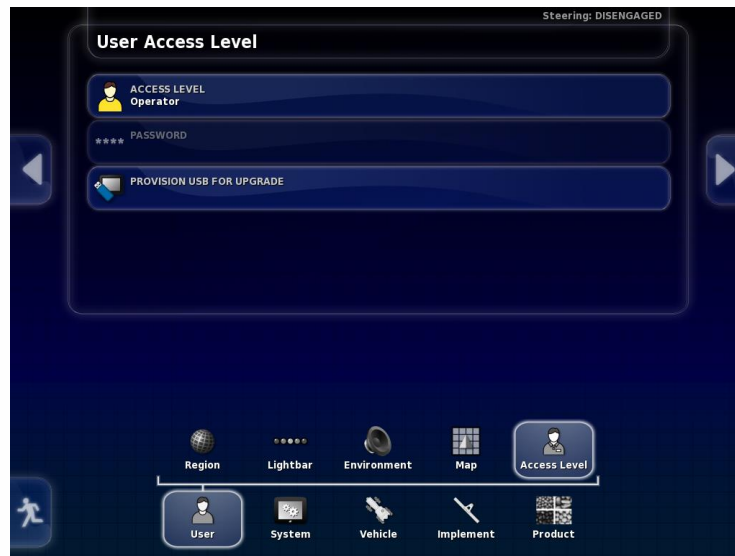
Navigation Menu:

- ECU Setup
- Add/Replace ECU
- Upgrade ECU
- Select
- New
- ECU
- Geometry
- Section Control
- Operator Inputs
- Seeder
- Speed
- User
- System
- Vehicle
- Implement
- Product

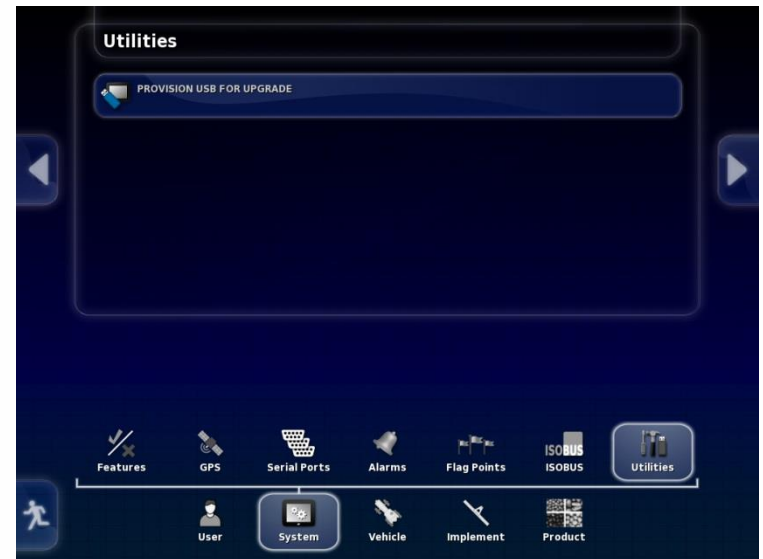


4. Put Thumb drive in X30 USB port to provision it for upgrade. Go to settings page by touching wrench symbol in bottom left of screen. Depending on Software version on X30 there are different locations for Provisioning USB for Upgrade, shown below. Software versions before 3.20.513 are on left 3.20.513 is on the right.

3.16.xxx to 3.18.xxx



3.20.xxx



5. Remove thumb drive
6. Turn off X30, plug thumb drive back in to X30
7. Re-start X30
8. Wait for message on screen to remove thumb drive. Remove thumb drive.



9. System will reboot and ask you if you want to do a touchscreen calibration but not necessary. **Select No.**
10. System will ask if you want to retain user settings. **Always select yes.**



11. On main screen, click the Bourgault button in the top left hand corner. Ensure that the software version shown is correct. (3.24.508)



12. Upgrade complete.

13. Check your profile and timings to make sure they are set properly. If using sectional control, section timing must be set.

14. When updating Software in monitor the firmware in the ECU(s) must also be updated . Follow the procedure in the previous pages to upgrade firmware.

15. The procedure will be the same software and firmware versions will vary from pictures make sure you know the versions that you are installing.