

“Reverse Direction” of travel upon startup of the X35 monitor

With this issue you will notice the direction of travel compared to the orientation of the implement is wrong. It will appear that the tractor is pushing the machine instead of pulling it like in the picture. If left like this it will not allow the machine to seed as its always on covered ground. This happens when the monitor is first powered on and it doesn't get a corrected signal from the receiver.

This may not happen every time you power on the X35 monitor.

There are two different ways to get the implement pointed in the right direction.

1. Power the X35 monitor off and back on again. Using the power down feature in the x35 or touching the power button once and agreeing to powering it down. This will allow the X35 to grab a corrected signal from your tractors receiver.

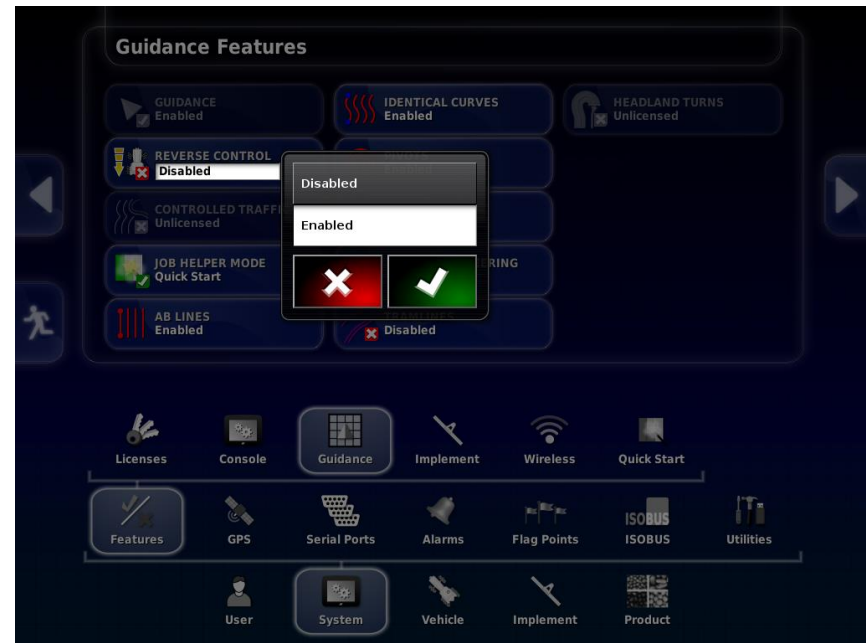
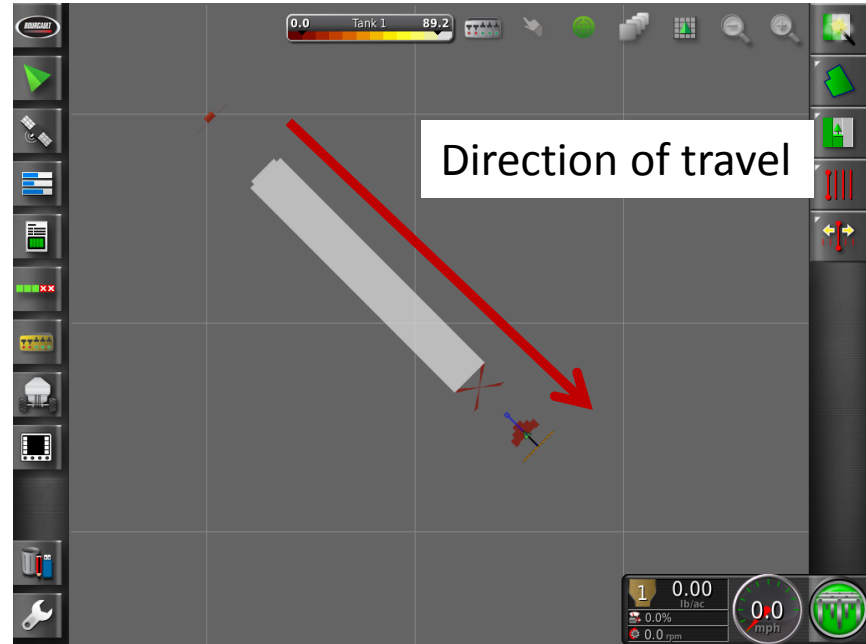
- If this doesn't resolve the issue then we need to go to the settings page and turn on a feature called **Reverse Control**

2. Go into the settings and go to:

System/Features/Guidance/Reverse Control

- enable it.

- then go back to your Guidance screen



Once back on the main guidance screen you will notice a new button above your master switch. This button will allow you to change the direction of travel at any point this Reverse Direction issue arises.

