



TSB # 18-2021

May 7, 2020

Page 1 of 3

TO:

ATTN:

SUBJECT: Improper “Baffle Plate” Positioning

FIX ON FAILURE (Failure Code 18.21)

Effective serial number range: model year 2021 - 7000, 8000 and 9000 series air-seeders equipped with ASC

BACKGROUND:

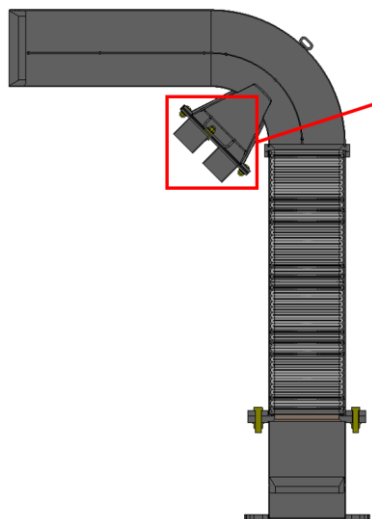
In model year 2020 a change was made to the ASC system where a “baffle plate” was installed in the clean air plenum – this baffle plate was introduced to improve the balance of the clean air flow when the section valves are closed, ultimately improving product cleanout over a wide range of rates and fan speeds.

This spring we have seen units experiencing issues when operating with ASC on (Leading and TBHD).

This problem may exist on the seed or fertilizer side and manifests itself in a couple of ways:

- When performing section timing tests the outside sections typically do not respond as expected
 - usually adding or removing time results in predictable “distance” changes – this is not happening.
- When seeding and approaching headlands when the sections turn off operators are encountering “plugging” of the airkit
 - Depending on the seeding scenario this may be the entire machine or more commonly the outside sections again.
 - When ASC is turned off plugging no longer happens
- It is important to investigate and confirm the basics are covered with regards to fans speeds, ASC valves plumbing/operation, timings and the like.

However If units are exhibiting the symptoms listed above it will be important to verify for the correct positioning of the “baffle plate”



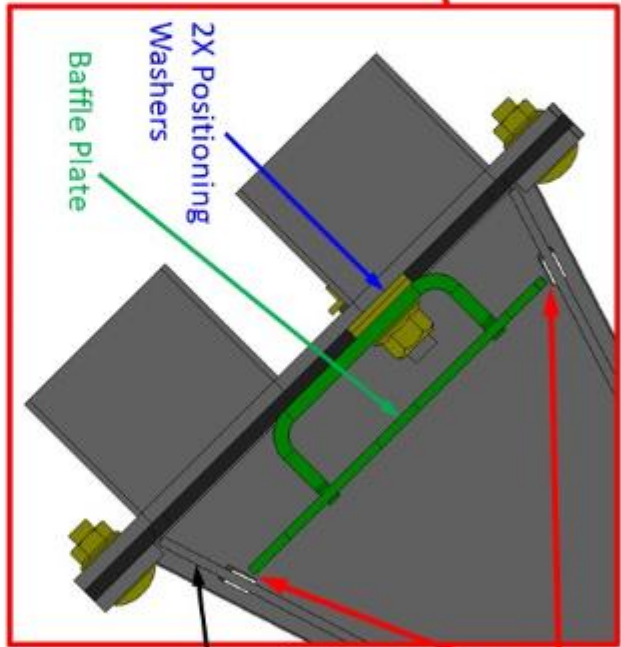
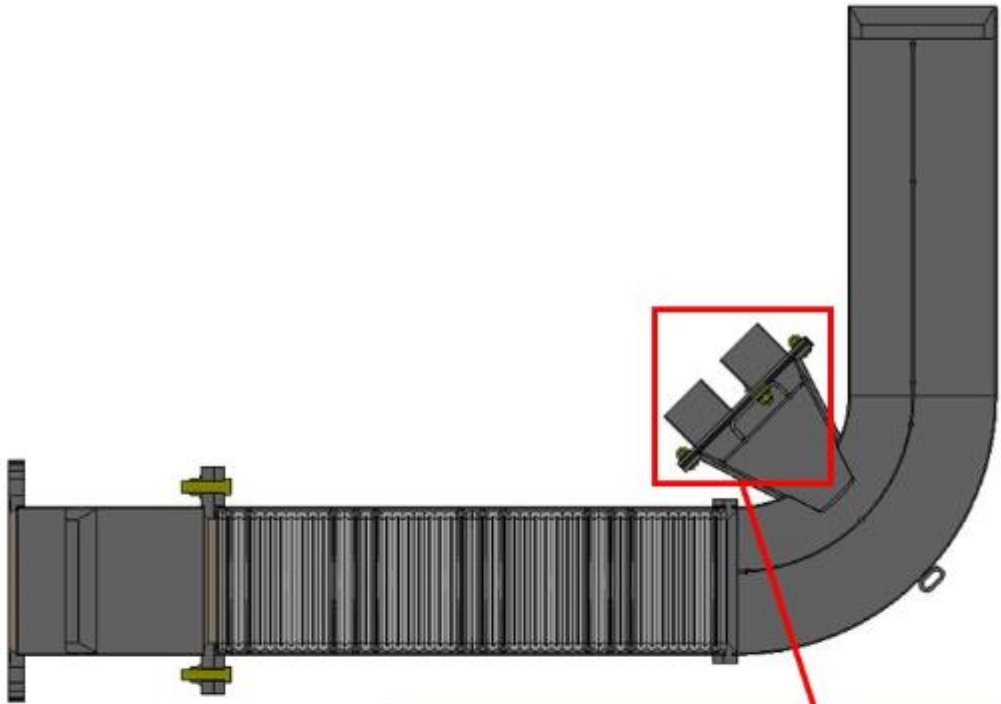


CORRECTIVE ACTION:

- **Confirm IF machines are encountering the following symptoms**
 - When performing section timing tests the outside sections typically do not respond as expected
 - usually adding or removing time results in predictable “distance” changes – this is not happening.
 - When seeding and approaching headlands when the sections turn off operators are encountering “plugging” of the airtkit
 - Depending on the seeding scenario this may be the entire machine or more commonly the outside sections again.
 - In some seeding scenarios “excess fan” speeds may minimize the issue
 - When ASC is turned off plugging no longer happens
- A quick test may also be performed to verify if this problem exists:
 - Park seeding system on a seeded section (painted coverage) of the field
 - Turn ASC off (section valves open)
 - Ensure a manual speed has been entered and proper fan speeds are being utilized
 - Engage “seed” tanks to allow product to flow to openers for 5-6 seconds
 - Turn ASC on (this will close the section valves and force air thru the clean air plenum)
 - IF the baffle plate is improperly positioned a very noticeable reduction in the air flow will be seen and potentially the 2.5” hoses may plug
 - Repeat for “fert”
- A physical inspection may also be performed by removing a couple clean air hoses
 - The baffle plate must have “gap” between itself and the plenum
 - The problems indicated above are the result of the baffle plate being tight against the plenum therefore restricting airflow
- To correct the problem perform the following steps
 - The baffle plate is bolted to the plenum cover
 - Remove the plenum cover
 - The baffle plate most likely has two washers (acting as spacers) between it and the plenum cover
 - Remove one washer – re-assemble and inspect for proper gap
 - Remove the second washer if proper gap is not achieved
 - Once proper gap is achieved test for proper function
 - Refer to the diagram/instruction on page 3

WARRANTY DETAIL:

Contact your local Bourgault dealer



Gap Around Periphery of Baffle Plate to Plenum Body

Gap is Visible Through Clean Air Port

- Ensure 3/32" to 5/32" Gap**
- Remove one washer, re-assemble to verify gap.
 - Remove second washer if required.

