

## **MRB SERIES 20 & 25 PRE-DELIVERY INSPECTION**

DATE \_\_\_\_\_

DEALERSHIP \_\_\_\_\_

MODEL SIZE \_\_\_\_\_

SERIAL # \_\_\_\_\_



**Mid Row Banders**

Series 20

Series 25

**Spacing**

9.8"

12.6"

**Castor Extensions**

N/A

12"

16"

Tools Required:

- 3/4" Torque Wrench
- 1-5/16" socket
- 1-1/8" socket
- Tape Measure
- 1/2" Torque Wrench

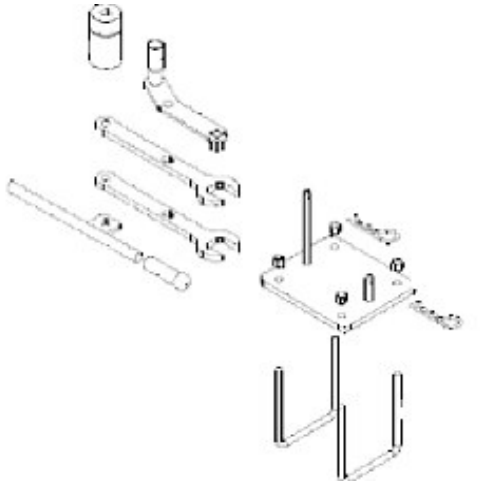


**Series 25 Banders**



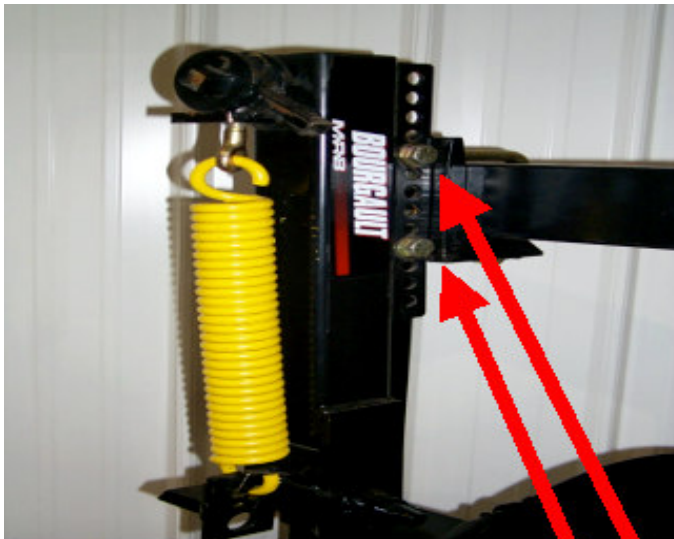
**Series 20 Banders**

<b>MID ROW BANDERS S25- ON UNIT (random 5)</b>	<b>CHECK OFF</b>
All 3/4" U-bolts (Bander Bars and Mounts) torqued to <b>220 ± 20 ft.lbs.</b>	
Ensure that 5/8 x 3-1/2 mounting bolts are torqued to <b>110 ft.lbs +40, -0 ft. lbs. Fig. 8</b>	
Ensure that 5/8 bander bar mounting ubolts are torqued to <b>110 ft.lbs +40, -0 ft. lbs.</b>	
M.R.B.s are in the correct locations	
Ensure wrench set is included on left inner wing frame	

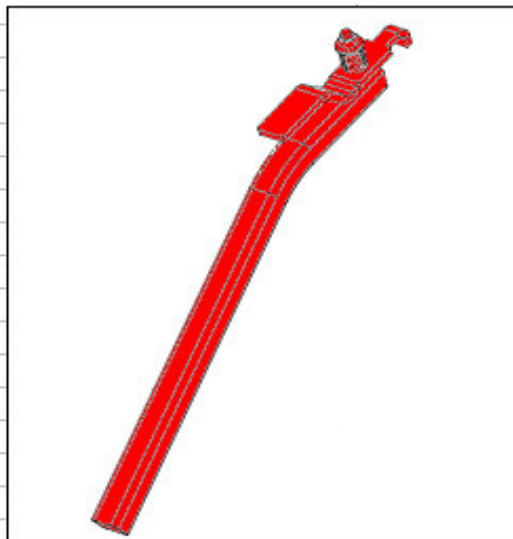


**Series 25 Wrench Kit**

<b>MID ROW BANDERS S20 - ON UNIT (random 5)</b>	<b>CHECK OFF</b>
All 3/4" U-bolts (Bander Bars and Mounts) are torqued to <b>250 ± 50 ft. lbs.</b>	
Depth bolts on <b>ALL</b> M.R.B.s are torqued to <b>150 ft.lbs +50, -40 ft. lbs. (Fig. 8)</b>	
M.R.B.s are in the correct locations	
MRB Cam wrenches included with unit	



**Figure 8**



**Series 20 Cam Wrench**

These two bolts are to be torqued to **110 ft.lbs + 40, - 0** on both series 20 + 25 banders

**Note: When checking torques  
check any random 5 MRB's**

Suggested Completion Time = 15 min.

Signature: \_\_\_\_\_

Actual Time \_\_\_\_\_

<b>Proper Adjustment of the Banders</b>			<b>Check off</b>
Ensure that the scraper has been set properly	<b>Fig. 1</b>	<b>Fig. 2</b>	
Ensure that the liquid tube has been set properly	<b>Fig. 1+ Fig. 3</b>		
Check the closer tine pressure with a fish scale to ensure pressure is between 10-15psi			
Check to see if the coulter hubs have all been greased by looking for grease past the seal on the inside of the hub			
Ensure th that the			
Scraper should be set 3/8" from the edge of the disc	<b>Figure 1</b>		
For optimal performance in less than ideal conditions, if you are using only the liquid tube or seed boot you should remove the one that is not being used			



**Figure 1**  
Liquid tube setting of 3/8" from the bottom of the disc



**Figure 2**

Scraper should never hang below the disc as this will cause the scraper to catch soil and debris resulting in a sliding disc, plugged boot or liquid tube



**Figure 3**  
Tube should not touch the disc or scraper



**Figure 4**

Seedboot should be placed in between the scraper and the coulter

Suggested Completion Time = 30 min.

Signature: \_\_\_\_\_

Actual Time \_\_\_\_\_

# Continued Adjustments

		<i>Check</i>
Shims on bottom end of scraper shaft are for fine tuning adjustments.		
No other adjustments on Series 20 banders	<b>Figure 1</b>	
Coarse adjustment on Series 25 explained to customer.	<b>Figure 2</b>	
Scraper pressure is set at the 20 lb setting.	<b>Figure3</b>	



**Figure 1**

These plastic shims are used for fine adjustment of the scraper arm



**Figure 2**

Course adjustment of the scraper is done by loosening the 2 bolts on the MRB leg and sliding the leg up or down. Ensure that these bolts are tight



**Figure 3**

Each scraper adjustment adds 10 psi. to the scraper

Suggested Completion Time = 10min.

Signature: \_\_\_\_\_

Actual Time \_\_\_\_\_

## Final Inspection

	checkoff
Wash banders, removing al road debris (road salt & tar)	
Remove any surface rust on MRB shafts and polish with a chrome polish.	
Check for aesthetic defects and shipping damage.	
Replace damaged parts.	
Touch up paint as required.	
Go over operators manual with customer.	

Suggested Completion Time = 20 min.

Signature: \_\_\_\_\_